



**Count on it.**

**Parts Catalog**

**STX-26 Stump Grinder**

Model No. 23210—Serial No. 312000001 and Up

Model No. 23210G—Serial No. 312000001 and Up

# Ordering Replacement Parts

To order replacement parts, please supply the part number, the quantity, and the description of each part desired.

## Understanding Reference Numbers

Each identified part in an illustration has a reference number. The reference number for a part also appears in the parts list, along with other information about the part.

This catalog uses two special reference number formats, one to indicate parts in a service assembly and another to indicate the quantity of a given part in an illustration.

## Service Assembly Reference Numbers

Parts in service assemblies have reference numbers in the form a:b. The a represents the reference number of the entire service assembly and the b represents a sequential number unique to each part within the service assembly.

For example, a wheel assembly might be identified by reference number 6, the tire by 6:1, the valve by 6:2, and the wheel by 6:3. When you order the assembly identified by reference number 6, you receive all parts identified by reference numbers 6:1, 6:2, and 6:3. However, you may also order any part individually. Reference numbers of this type appear in illustration and in parts lists.

## Reference Numbers Indicating Quantity

In an illustration, if a reference number indicates more than one part, the reference number has the form nX y. The n represents the quantity of the part, the X is the multiplication symbol, and the y represents the reference number.

For example, in an illustration, the reference number 2X 37 means that two of the parts identified by reference number 37 are indicated.

# List of Abbreviations

**AR:** as required

**ASM:** assembly

**BBC:** blade brake control

**BHTF:** button head thread forming

**CARR:** carriage

**CCW:** counter clockwise

**CW:** clockwise

**DEG:** degrees

**DPA:** Dual Point Adjustment

**ECM:** electronic control module

**EXT:** external

**FH:** flat head

**GA:** gauge

**HD:** heavy-duty

**HF:** hex flange

**HH:** hex head

**HHF:** hex head flange

**HHFTF:** hex head flange thread forming

**HJ:** hex jam

**HLH:** hex lag head

**HOC:** height-of-cut

**HSBH:** hex socket button head

**HSFH:** hex socket flat head

**HSH:** hex socket head

**HWH:** hex washer head

**HWHTF:** hex washer head thread forming

**HYD:** hydraulic

**LH:** left hand

**LPG:** Liquid Propane Gas

**NI:** nylon insert

**NPTF:** national pipe thread fine

**PFH:** phillips flat head

**PPH:** phillips pan head

**PPHTF:** phillips pan head thread forming

**PRH:** phillips round head

**PTH:** phillips truss head

**PTO:** power-take-off

**RH:** right hand

**ROPS:** roll-over protection system

**RRB:** rear roller brush

**SFH:** slotted fillister head

**SHH:** slotted hex head

**SHWH:** slotted hex washer head

**SPH:** slotted pan head

**SQH:** square head

**SRH:** slotted round head

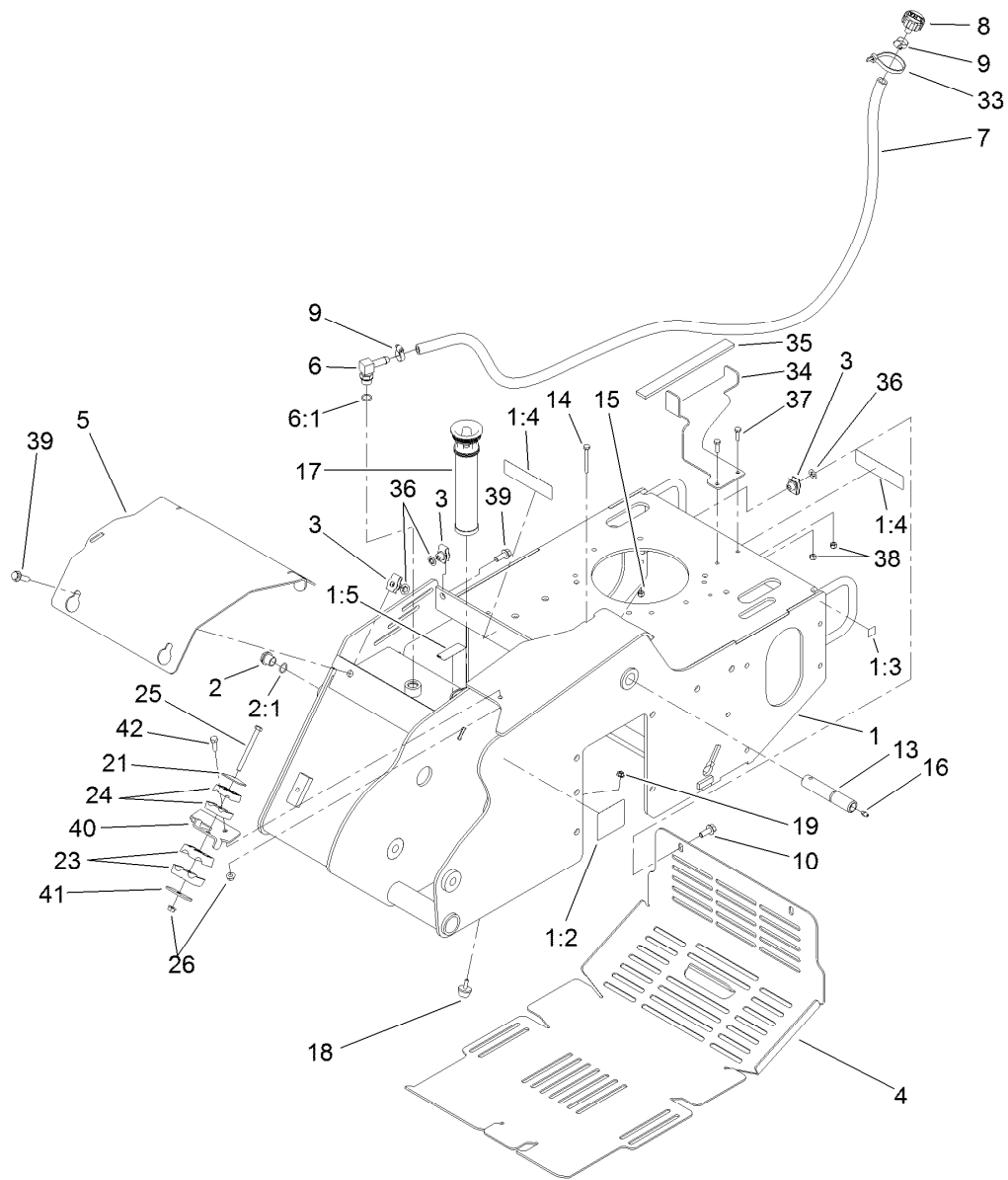
**STD:** standard

**TAP:** self tapping

**TTH:** torx truss head

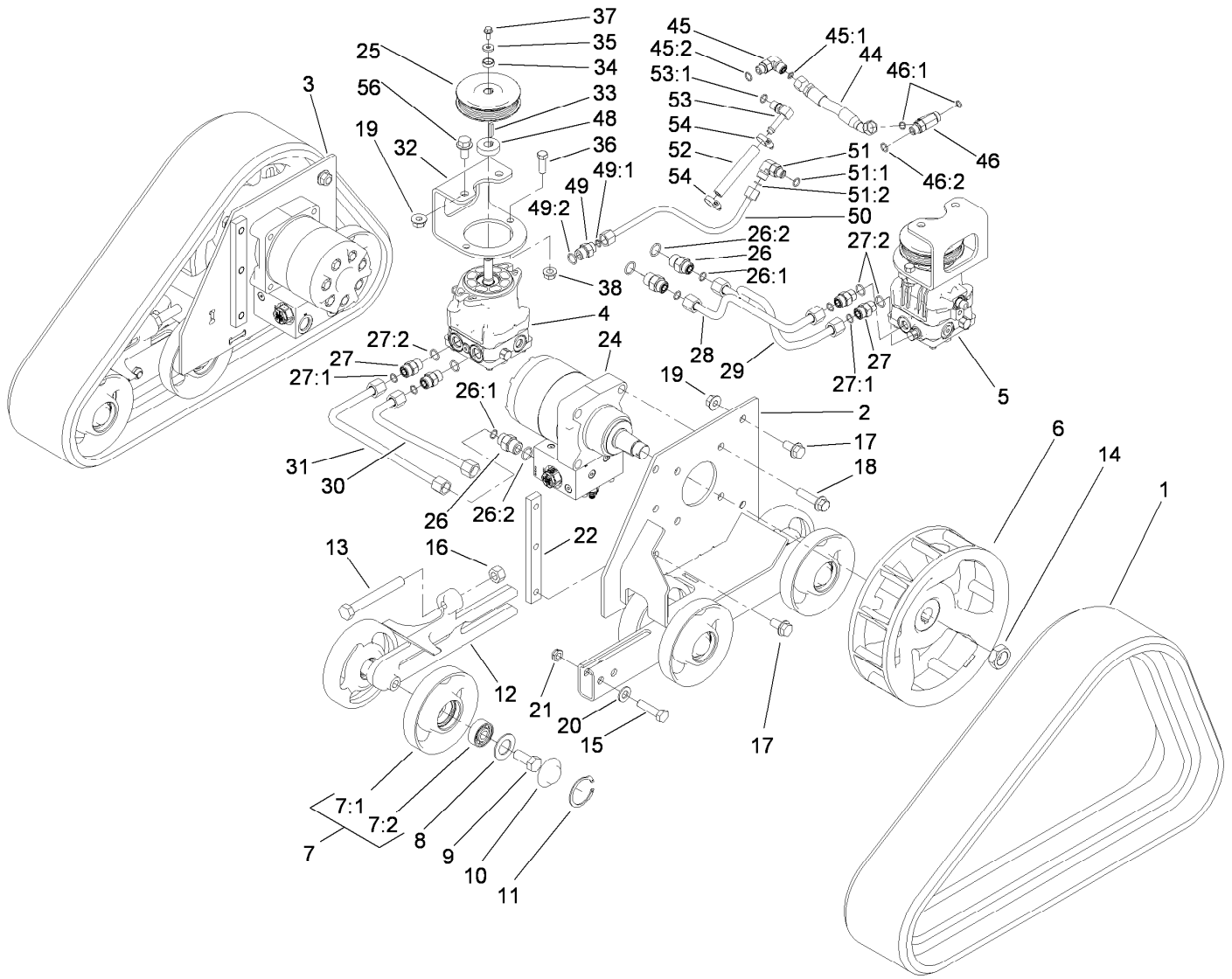
# Contents

Main Frame Assembly . . . . .	4
Track and Traction Assembly . . . . .	5
Hydraulic Pump Assembly No. 117-6409 . . . . .	7
Hydraulic Pump Assembly No. 117-6410 . . . . .	8
Hydraulic Motor Assembly 119-4557 . . . . .	9
Engine Assembly . . . . .	10
Traction Control Assembly . . . . .	12
Cutter Head Assembly . . . . .	14
Hydraulic Cylinder Assembly No. 117-6441 . . . . .	16
Hydraulic Cylinder Assembly No. 112-2602 . . . . .	17
Hydraulic Motor Assembly No. 119-4551 . . . . .	18
Control Tower Assembly . . . . .	19
Control Valve Assembly . . . . .	21
Control Valve Assembly No. 119-4585 . . . . .	22
Cutter Wheel Valve Assembly No. 119-4586 . . . . .	23
Two-Button Handle Grip Assembly No. 119-4587 . . . . .	24
Oil Cooler Assembly . . . . .	25
Hydraulic Routing Assembly . . . . .	26
Electrical Assembly . . . . .	28
Cylinder and Crankcase Assembly . . . . .	29
Piston and Crankshaft Assembly . . . . .	30
Valve and Camshaft Assembly . . . . .	31
Lubrication Equipment Assembly . . . . .	32
Cooling Equipment Assembly . . . . .	33
Electric Equipment Assembly . . . . .	34
Control Equipment Assembly . . . . .	35
Carburetor Assembly . . . . .	36
Air Filter and Muffler Assembly . . . . .	38
Fuel Tank and Valve Assembly . . . . .	39
Starter Assembly . . . . .	40
Label Set . . . . .	41
Attachments and Accessories . . . . .	42



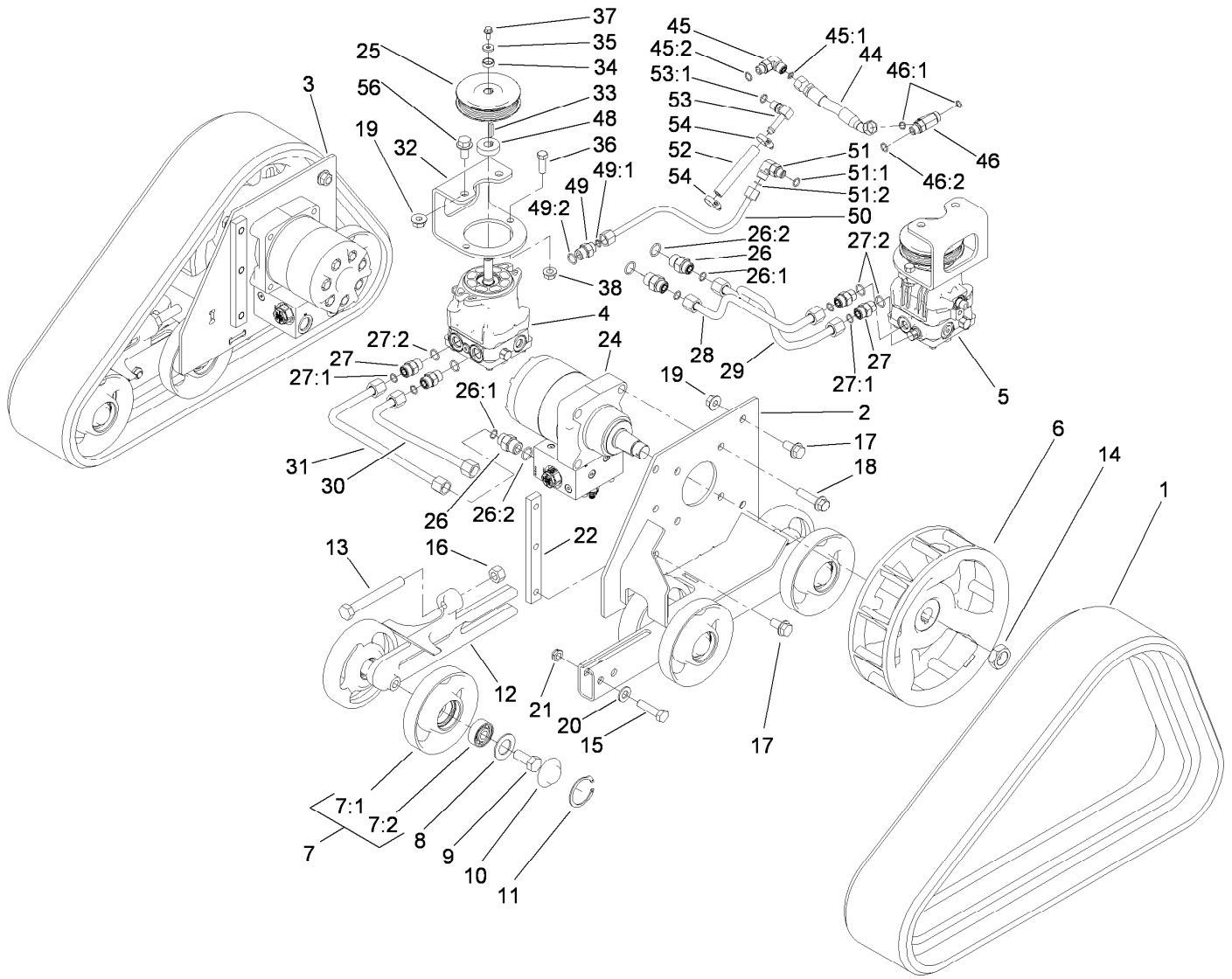
## Main Frame Assembly

Ref.	Part Number	Qty.	Description	Ref.	Part Number	Qty.	Description
1	114-8630	1	Main Frame ASM	16	302-5	1	Fitting-Grease
1:2	100-4650	1	Decal-Warning	17	114-3039	1	In-Tank Filter ASM
1:3	93-9084	2	Decal-Point, Lift	18	1-523420	1	Bumper
1:4	93-7814	2	Decal-Danger	19	32128-33	1	Nut-HF
1:5	93-6686	1	Decal-Oil, HYD	21	69-9760	1	Coverplate
2	114-3075	1	Glass-Sight	23	94-8105	2	Clamp-Tube
2:1	237-79	1	O-Ring	24	56-7976	2	Clamp-Tube
3	112-4576	5	Nut-Clip, U	25	322-22	1	Screw-HH
4	119-5106-01	1	Cover-Rear	26	32128-20	2	Nut-HF
5	119-4566-03	1	Plate-Cover, Front	33	3334-945	1	Tie-Cable
6	354-120	1	Fitting-HYD, 90 DEG	34	119-5091-01	1	Bracket-Tank
6:1	237-79	1	O-Ring	35	117-6417	1	Pad-Foam
7	114-3042	1	Hose-Breather	36	107-3154	5	Nut-Push
8	68-6150	1	Breather	37	321-5	2	Screw-HH
9	2412-36	2	Clamp-Hose	38	3296-42	2	Nut-Lock, NI
10	3234-11	2	Screw-HHF	39	3234-18	3	Screw-HHF
13	120-7352	1	Pin-Pivot	40	119-4634-01	1	Bracket-Clamp
14	321-18	1	Screw-HH	41	119-4636	1	Plate-Clamp
15	3296-42	1	Nut-Lock, NI	42	322-5	1	Screw-HH



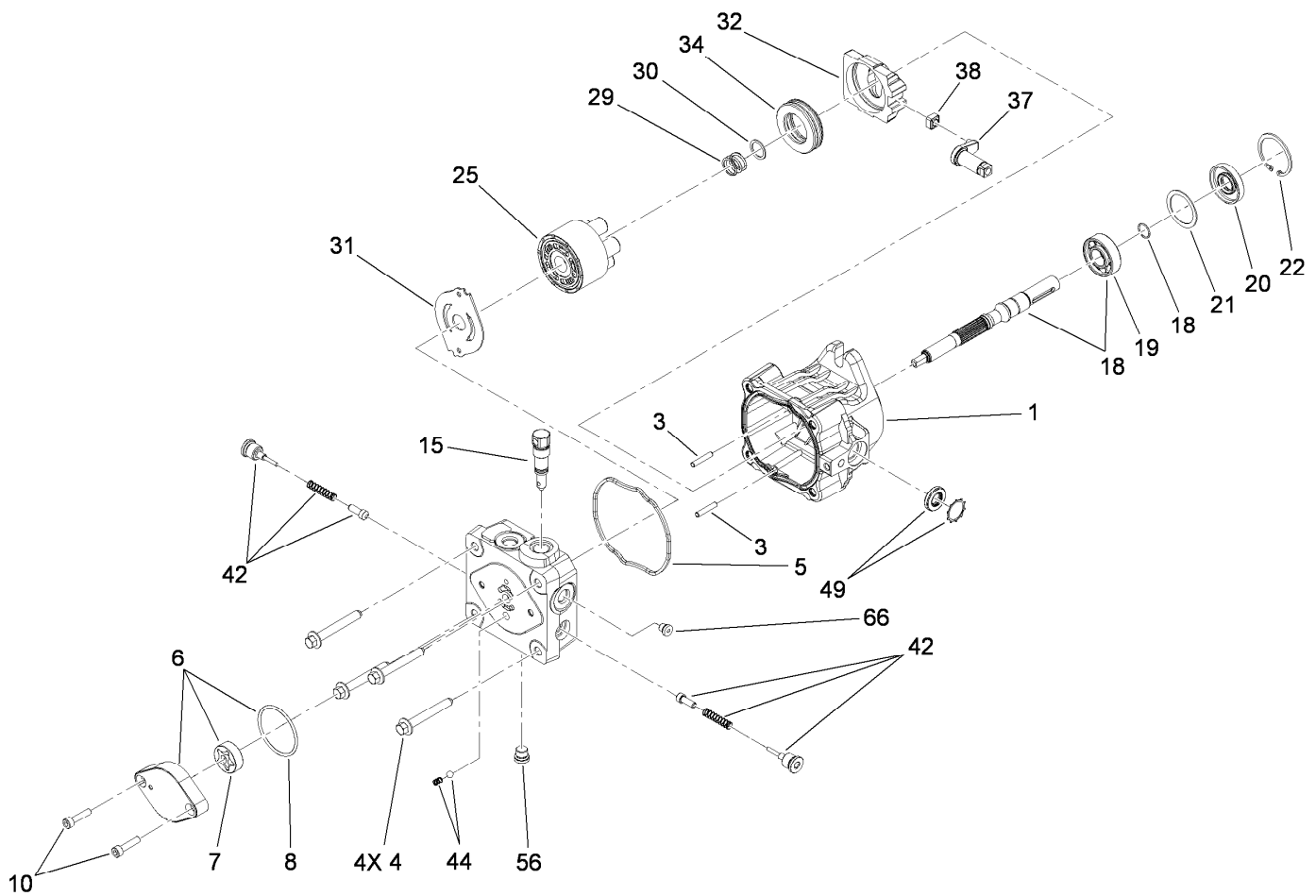
## Track and Traction Assembly

Ref.	Part Number	Qty.	Description	Ref.	Part Number	Qty.	Description
1	112-4816	2	Track-Rubber	20	3256-26	4	Washer-Flat
2	114-2992-03	1	LH Track Frame ASM	21	3296-45	4	Nut-Lock, NI
3	114-2993-03	1	RH Track Frame ASM	22	114-3091	2	Bar-Thread
4	117-6409	1	Pump-HYD, RH	24	119-4557	2	HYD Motor ASM
5	117-6410	1	Pump-HYD, LH	25	115-1298	2	Sheave
6	117-6426-03	2	Wheel-Drive	26	340-6	4	Fitting-HYD, Straight
7	112-4817	12	Wheel-Tensioner	26:1	237-30	1	O-Ring
7:1	114-3014-03	1	Wheel-Track	26:2	237-80	1	O-Ring
7:2	93-4237	1	Bearing	27	340-4	4	Fitting-HYD, Straight
8	106-7585	12	Gasket-Bogie	27:1	237-30	1	O-Ring
9	327-4	12	Screw-HH	27:2	237-79	1	O-Ring
10	106-7557	12	Cap-Wheel, Bearing	28	119-4581	1	HYD Tube ASM
11	106-7595	12	Ring-Snap, Internal	29	119-4582	1	HYD Tube ASM
12	114-3077-03	2	Tensioner-Track	30	119-4583	1	HYD Tube ASM
13	112-4874	2	Screw-HH, TAP	31	119-4584	1	HYD Tube ASM
14	106-8159	2	Nut-Lock	32	115-1289-03	2	Bracket-Mount, Pump
15	325-8	4	Screw-HH	33	80-6090	2	Key-Pump
16	3217-11	2	Nut-Hex	34	108-4211	2	Bushing
17	3234-6	10	Screw-HHF	35	73-3580	2	Washer
18	3234-27	8	Screw-HHF	36	324-5	4	Screw-HH
19	32128-49	8	Nut-HHF	37	33103-016	2	Screw-HHF



## Track and Traction Assembly (continued)

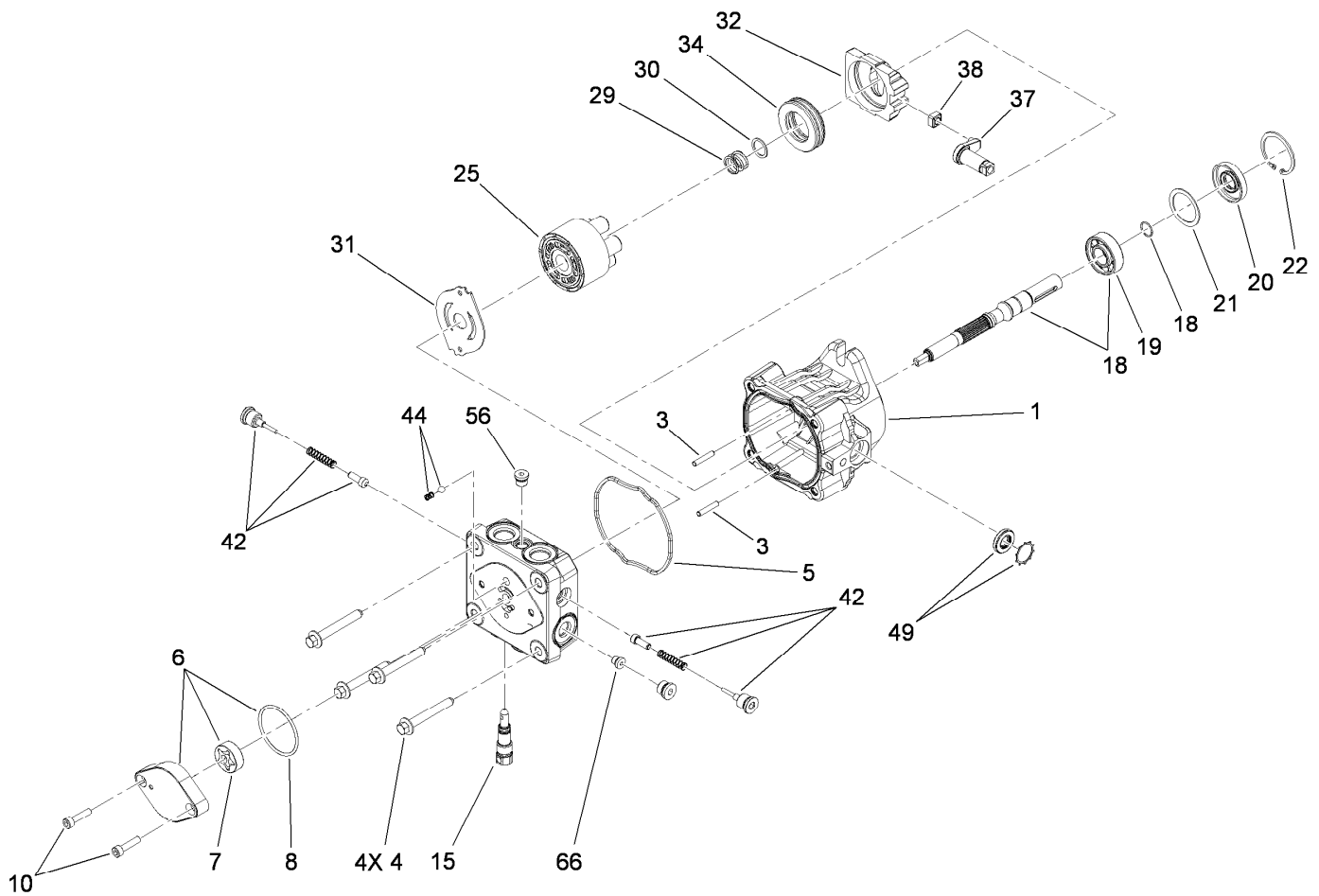
Ref.	Part Number	Qty.	Description	Ref.	Part Number	Qty.	Description
38	32128-42	4	Nut-HF	49:2	237-79	1	O-Ring
44	115-1297	1	HYD Hose ASM	50	117-1305	1	HYD Tube ASM
45	340-77	1	Fitting-HYD, 90 DEG	51	340-77	1	Fitting-HYD, 90 DEG
45:1	237-22	1	O-Ring	51:1	237-22	1	O-Ring
45:2	237-42	1	O-Ring	51:2	237-42	1	O-Ring
46	340-86	1	Fitting-Tee	52	115-4083	1	Hose
46:1	237-22	2	O-Ring	53	100-4887	1	Fitting-Barbed, 90 DEG
46:2	237-42	1	O-Ring	53:1	237-42	1	O-Ring
48	115-4002	2	Spacer	54	2412-36	2	Clamp-Hose
49	340-3	1	Adapter	56	325-4	4	Screw-HH
49:1	237-22	1	O-Ring				



## Hydraulic Pump Assembly No. 117-6409

Ref.	Part Number	Qty.	Description	Ref.	Part Number	Qty.	Description
1	115-4464	1	Housing Kit	29	94-1936	1	Spring-Block
3	106-8753	2	Pin-Headless, Straight	30	94-1937	1	Washer-Thrust, Block
4	106-8754	4	Bolt-HF	31	105-6185	1	Plate-Valve
5	106-8755	1	O-Ring	32	94-1907	1	Swashplate-Variable
6	106-8756	1	Charge Pump Kit	34	94-6922	1	Bearing-Thrust
7	104-2122	1	Gerotor ASM	37	115-4458	1	Arm-Trunnion, Tapered Square
8	106-8757	1	O-Ring	38	94-1910	1	Guide-Slot
10	104-2111	2	Capscrew	42	98-3252	2	Valve-Check (W/Poppet)
15	106-8759	1	Bypass Valve Kit	44	106-8760	1	Charge Relief Valve Kit
18	103-2664	1	Input Shaft Kit	49	114-8155	1	Trunnion Seal Kit
19	104-5311	1	Bearing-Ball	56	106-8762	1	Plug-HSH
20	104-5310	1	Seal-Lip	66	106-8763	1	Plug-HSH
21	104-5308	1	Spacer	99	105-6184	1	Seal Overhaul Kit ●
22	104-5309	1	Ring-Retaining				
25	103-2666	1	Cylinder Block Kit				

● Not illustrated

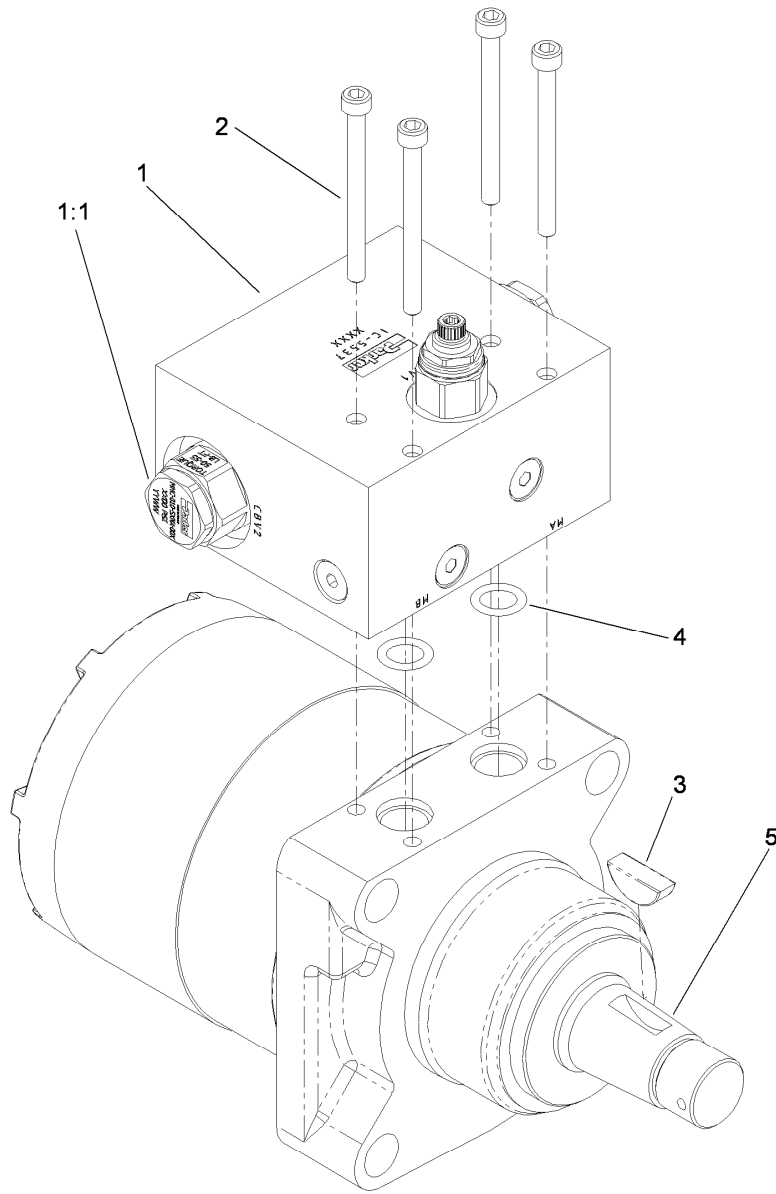


## Hydraulic Pump Assembly No. 117-6410

Ref.	Part Number	Qty.	Description	Ref.	Part Number	Qty.	Description
1	115-4464	1	Housing Kit	29	94-1936	1	Spring-Block
3	106-8753	2	Pin-Headless, Straight	30	94-1937	1	Washer-Thrust, Block
4	106-8754	4	Bolt-HF	31	105-6185	1	Plate-Valve
5	106-8755	1	O-Ring	32	94-1907	1	Swashplate-Variable
6	106-8756	1	Charge Pump Kit	34	94-6922	1	Bearing-Thrust
7	104-2122	1	Gerotor ASM	37	115-4458	1	Arm-Trunnion, Tapered Square
8	106-8757	1	O-Ring	38	94-1910	1	Guide-Slot
10	104-2111	2	Capscrew	42	98-3252	2	Valve-Check (W/Poppet)
15	106-8759	1	Bypass Valve Kit	44	106-8760	1	Charge Relief Valve Kit
18	103-2664	1	Input Shaft Kit	49	114-8155	1	Trunnion Seal Kit
19	104-5311	1	Bearing-Ball	56	106-8762	1	Plug-HSH
20	104-5310	1	Seal-Lip	66	106-8763	1	Plug-HSH
21	104-5308	1	Spacer	99	105-6184	1	Seal Overhaul Kit ●
22	104-5309	1	Ring-Retaining				
25	103-2666	1	Cylinder Block Kit				

● Not illustrated

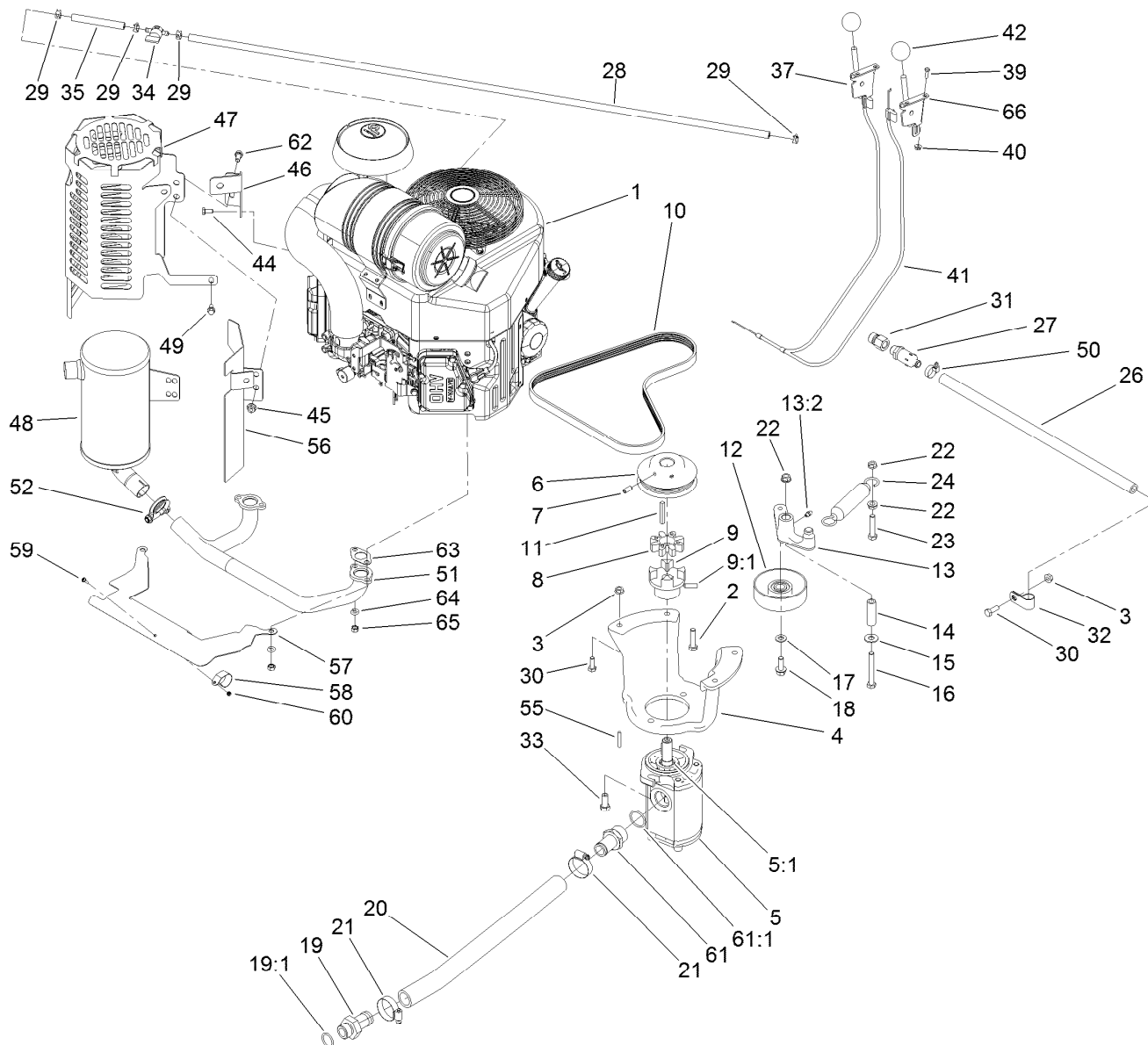




## Hydraulic Motor Assembly 119-4557

<i>Ref.</i>	<i>Part Number</i>	<i>Qty.</i>	<i>Description</i>
1	119-4599	1	Counterbalance Valve ASM
1:1	119-4608	2	Valve-Cartridge
2	119-4611	4	Bolt-HSH
3	3257-42	1	Key-Woodruff
4	120-0691	2	O-Ring
5	76-0860	1	Shaft-Coupling
99	100-6131	1	Motor Seal Kit ●

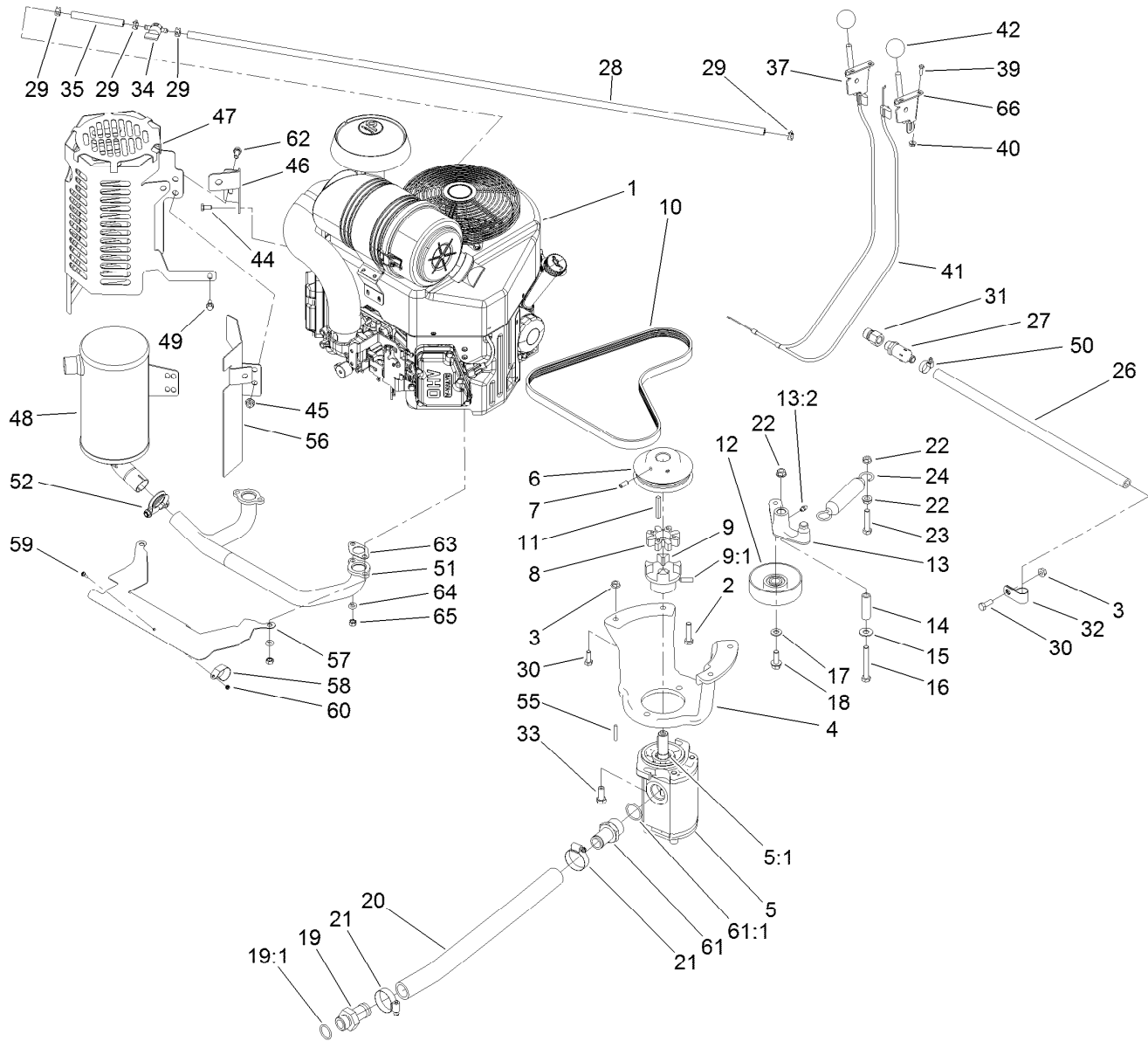
● Not illustrated



## Engine Assembly

Ref.	Part Number	Qty.	Description
1	117-6305	1	Engine-Kawasaki, Fx730V
2	323-8	4	Screw-HH
3	32128-20	3	Nut-HF
4	115-1480-03	1	Mount-Pump
5	117-6444	1	Gear Pump ASM
5:1	115-4045	1	Seal-Wiper
6	114-8559-03	1	Pulley-Engine
7	3246-6	2	Screw-Set, HSH
8	93-8827	1	Spider-Coupler
9	114-2933	1	Coupler-Flex
9:1	100-7594	1	Screw-Set
10	114-2991	1	Belt-V
11	608006	1	Key-Square
12	95-8802	1	Pulley-Idler
13	117-6323	1	Idler Arm ASM
13:2	302-5	1	Fitting-Grease
14	114-2916	1	Bushing-Idler
15	3256-4	1	Washer-Flat
16	323-13	1	Screw-HH
17	3256-24	1	Washer-Flat
18	3234-11	1	Screw-HHF

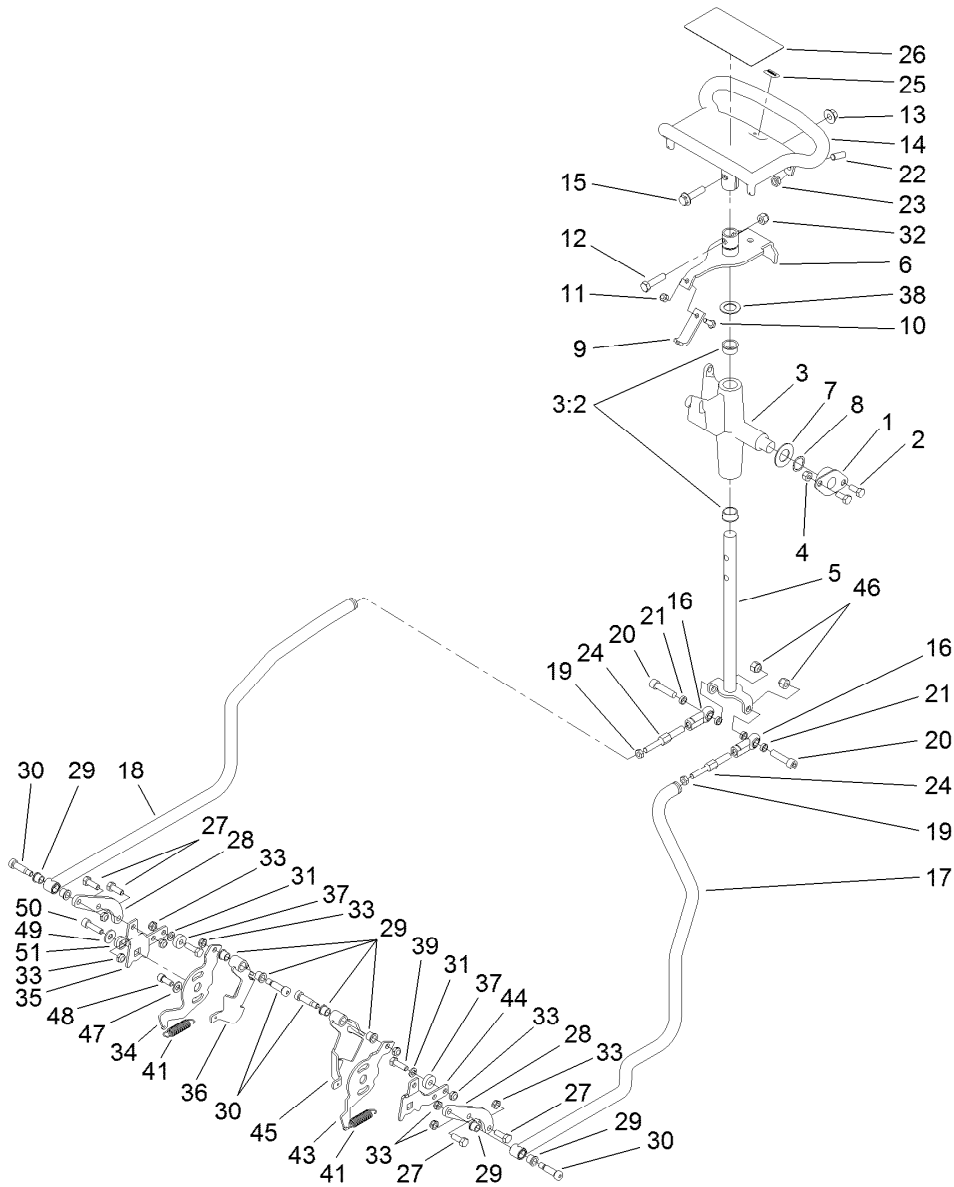
Ref.	Part Number	Qty.	Description
19	99-3017	1	Fitting
19:1	237-81	1	O-Ring
20	114-2917	1	Hose-Suction
21	2412-111	2	Clamp
22	3290-357	3	Nut-HHF, Whiz
23	323-9	1	Screw-HH
24	66-4270	1	Spring-Extension
26	99-1356	1	Hose-Vent
27	92-6877	1	Valve-Drain, Oil
28	110-3372	1	Hose-Fuel
29	2412-98	4	Clamp-Hose
30	322-4	3	Screw-HH
31	103-1966	1	Adapter
32	2412-81	1	Clamp-R
33	324-4	2	Screw-HH
34	1-603770	1	Valve-Fuel
35	109-0295	1	Hose-Fuel
37	108-9730	1	Control Lever ASM
39	3290-134	4	Screw
40	32128-17	4	Nut-Lock, Flange
41	115-1211	2	Cable-Control



### Engine Assembly (continued)

Ref.	Part Number	Qty.	Description
42	233-42	2	Knob
44	33114-016	2	Screw-HH
45	112-2844	3	Nut-HF
46	115-9233-03	1	Bracket-Mount, Muffler
47	115-9234-03	1	Muffler Shield ASM
48	117-6319	1	Muffler
49	33103-016	1	Screw-HHF
50	2412-36	1	Clamp-Hose
51	117-6318	1	Manifold
52	2112-11	1	Muffler Clamp ASM
55	27-8590	1	Key-Square
56	117-6337	1	Bracket-Shield, Heat

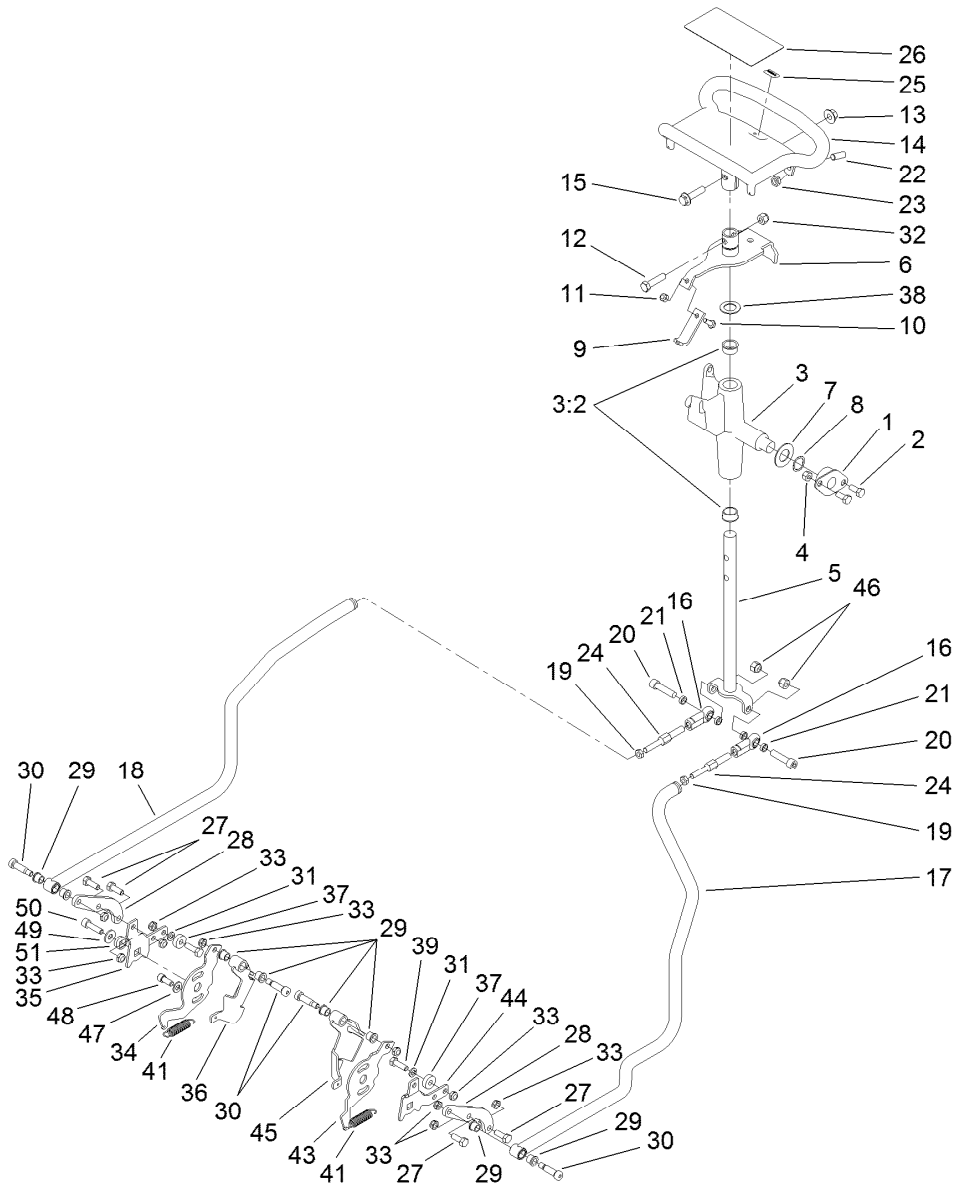
Ref.	Part Number	Qty.	Description
57	115-9227	1	Plate-Shield, Heat
58	115-6488	1	Clamp
59	115-6494	1	Screw-Pan
60	115-6495	1	Nut-Hex
61	354-78	1	Connector-Hose
61:1	237-146	1	O-Ring
62	33114-020	3	Screw-HH
63	117-8858	2	Gasket-Muffler
64	115-6496	4	Washer-Spring
65	115-6611	4	Nut-Hex
66	110-5547	1	Control Lever ASM



## Traction Control Assembly

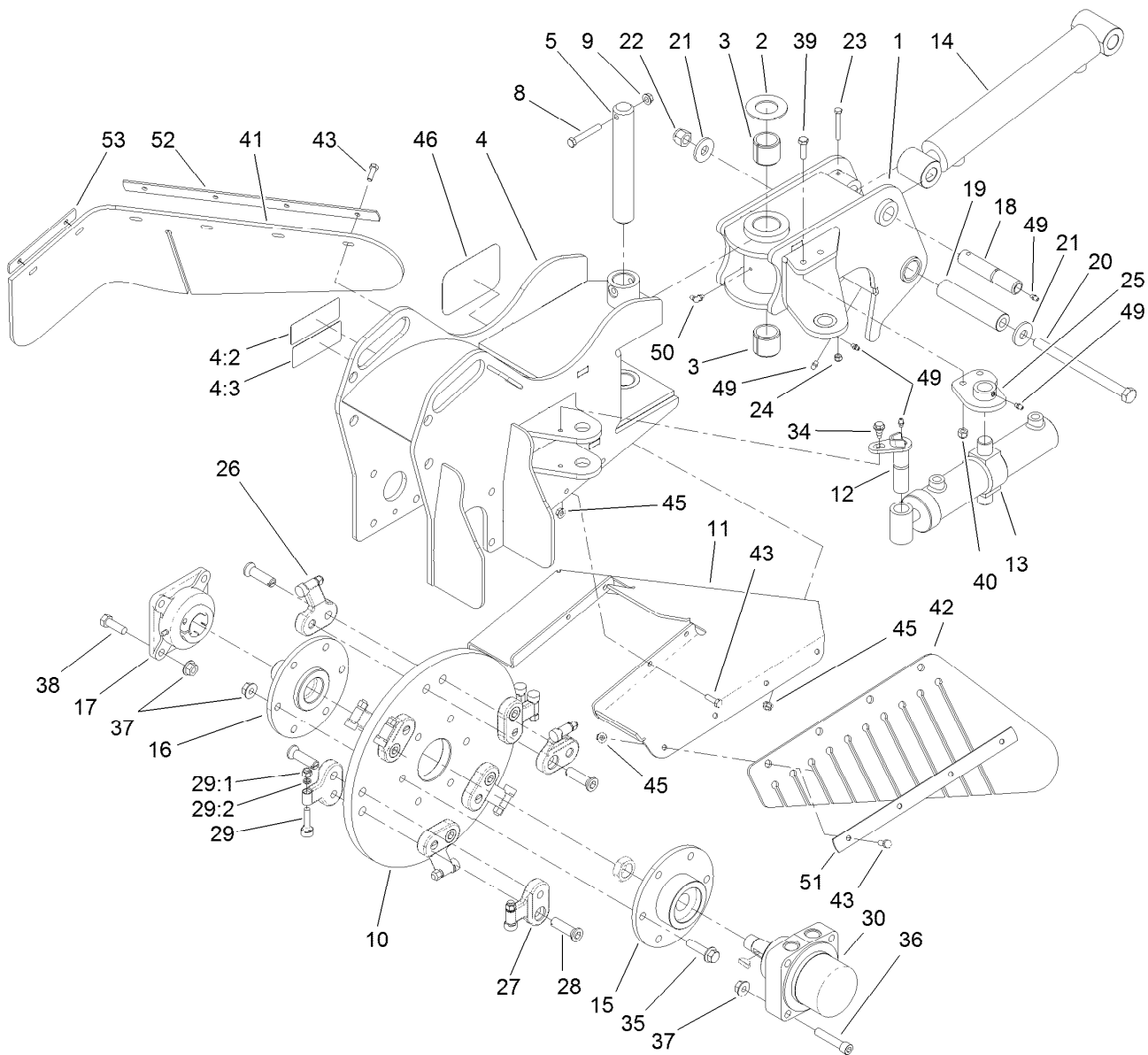
Ref.	Part Number	Qty.	Description
1	68-2970	2	Bushing
2	322-3	4	Screw-HH
3	106-5737	1	Control Support ASM
3:2	256-252	2	Bearing-Flange
4	3296-29	4	Nut-Lock, NI
5	117-6335	1	Drive Rod ASM
6	112-2783	1	Pivot Lever ASM
7	3256-39	2	Washer-Flat
8	95-3703	2	Washer-Spring, Wave
9	115-1204	1	Plate-Neutral
10	321-4	1	Screw-HH
11	3296-42	1	Nut-Lock, NI
12	323-8	1	Screw-HH
13	32128-43	1	Nut-Flange
14	106-7614-03	1	Handle-Control
15	3234-18	1	Screw-HHF
16	103-1167	2	Joint-Ball End, LH
17	119-5096	1	LH Control Rod
18	119-5097	1	RH Control Rod
19	3220-2	2	Nut-Jam
20	3274-2	2	Screw-HSH

Ref.	Part Number	Qty.	Description
21	108-0634	4	Spacer-Plate, Retaining
22	3247-6	2	Screw-Set
23	3218-3	2	Nut-Jam
24	117-6334	2	Link-Control, Adjustment
25	98-1459	1	Decal
26	115-4020	1	Decal-Traction
27	322-4	4	Screw-HH
28	115-1290	2	Plate-Adapter, Control, RH
29	256-116	8	Bushing-Flange
30	114-8629	4	Bolt-Shoulder
31	3253-4	2	Washer-Lock
32	3296-39	1	Nut-Lock, NI
33	3296-47	10	Nut-Lock, NI
34	115-6535	1	Plate-Base, RH
35	115-6536	1	Plate-Arm, Return
36	115-6636	1	Pivot ASM, RH
37	251-259	2	Bearing-Ball
38	257-8	1	Washer-Thrust
39	322-5	2	Screw-HH
41	63-2870	2	Spring-Extension
43	115-6549	1	Plate-Base, LH



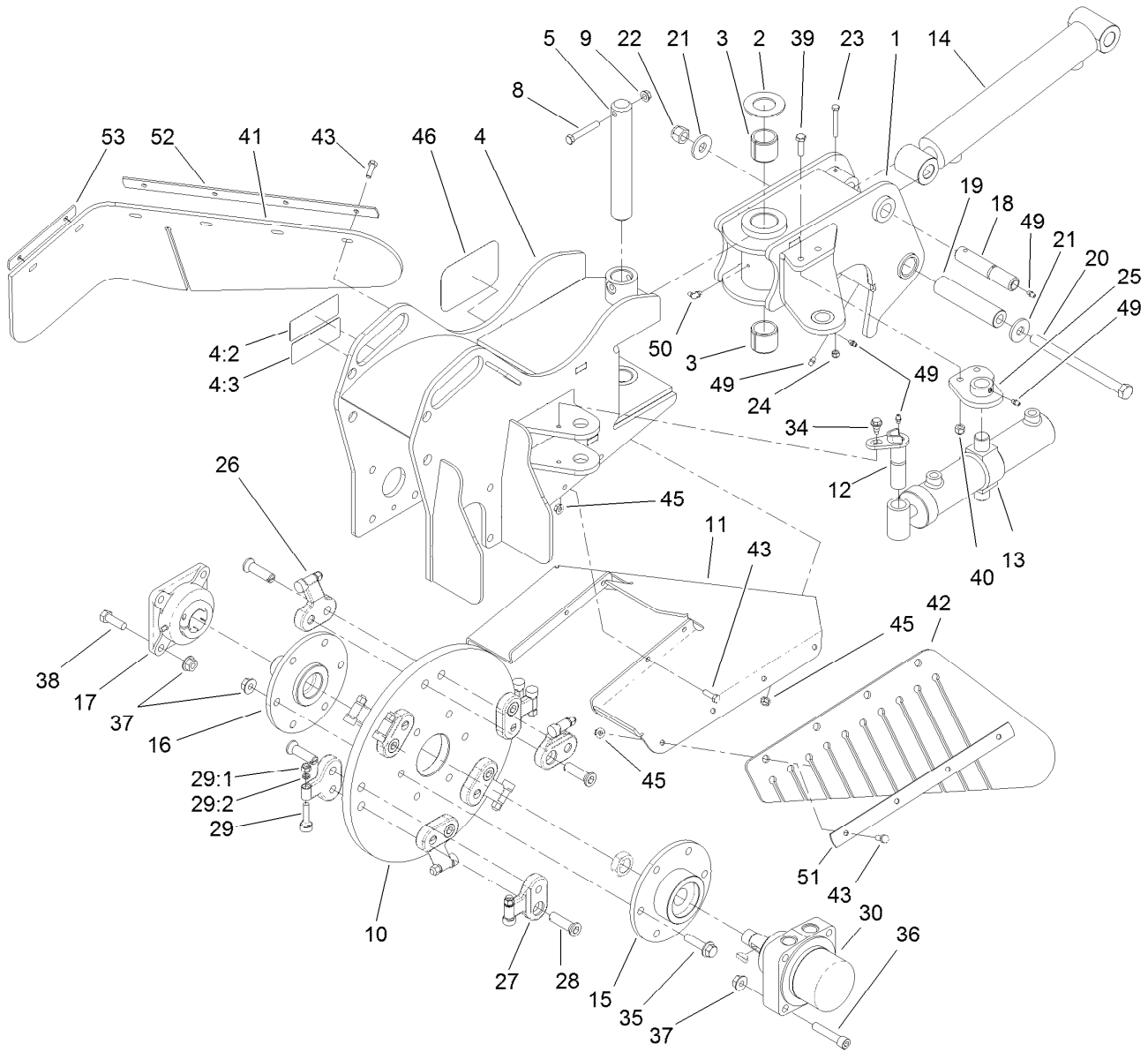
## Traction Control Assembly (continued)

<i>Ref.</i>	<i>Part Number</i>	<i>Qty.</i>	<i>Description</i>	<i>Ref.</i>	<i>Part Number</i>	<i>Qty.</i>	<i>Description</i>
44	115-6628	1	Plate-Arm, Return, LH	48	3273-14	2	Screw-HSH
45	115-6637	1	LH Pivot ASM	49	3256-3	2	Washer-Flat
46	3296-39	2	Nut-Lock, NI	50	94-3559	2	Screw-HSH
47	3290-456	2	Washer-Belleville	51	117-6429	2	Lock-Trunion



## Cutter Head Assembly

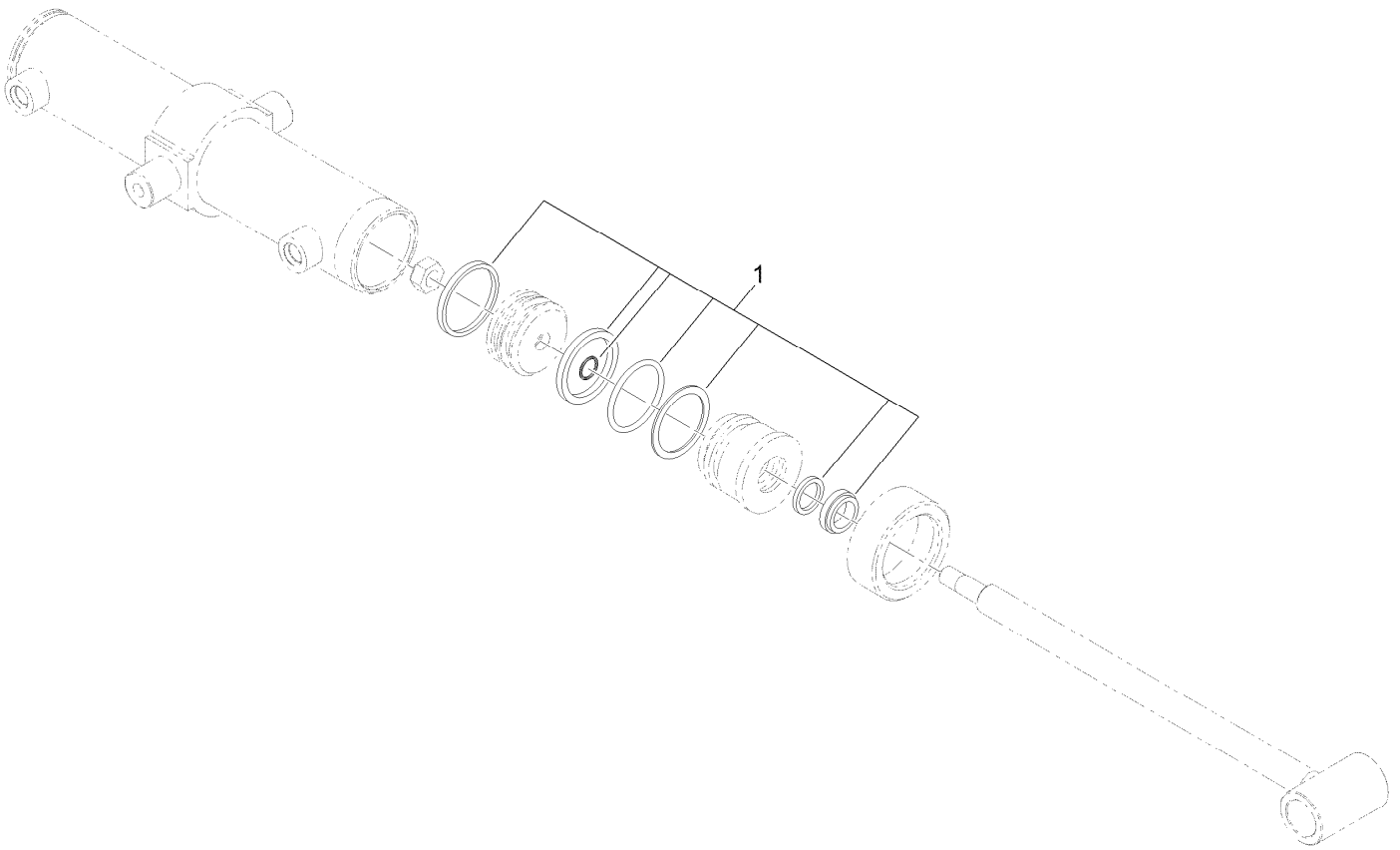
Ref.	Part Number	Qty.	Description	Ref.	Part Number	Qty.	Description
1	117-6390-01	1	Pivot ASM	22	3296-53	1	Nut-Lock, NI
2	99-2707	1	Washer	23	321-18	1	Screw-HH
3	99-2713	2	Bushing-Tension	24	3296-42	1	Nut-Lock, NI
4	119-4612	1	Frame ASM	25	115-9392-01	1	Cylinder Mount ASM
4:2	107-9366	1	Decal-Warning	26	115-9384	8	Pocket-Angled
4:3	93-7321	1	Decal-Danger	27	115-9388	4	Pocket-Straight
5	117-6445	1	Pin-Pivot	28	115-9386	12	Bolt-HSH, RH
8	323-47	1	Screw-HH	29	115-9385	12	Grinder Tooth ASM
9	3290-357	1	Nut-HHF, Whiz	29:1	3296-39	1	Nut-Lock, NI
10	119-5050-03	1	Wheel-Cutter	29:2	121-4365	1	Spacer-Tooth
11	119-5064-03	1	Guard-Chip	30	119-4551	1	HYD Motor ASM
12	94-9797	1	Pin-Pivot	34	99-5105	1	Bolt-Shoulder
13	117-6441	1	HYD Cylinder ASM	35	3234-27	6	Screw-HHF
14	112-2602	1	HYD Cylinder ASM	36	3274-71	4	Screw-HSH
15	119-4570-03	1	Drive Hub ASM	37	32128-49	14	Nut-HHF
16	115-9395-03	1	Stub Shaft ASM	38	325-6	4	Screw-HH
17	104-2026	1	Bearing	39	323-7	2	Screw-HH
18	120-7352	1	Pin-Pivot	40	3296-39	2	Nut-Lock, NI
19	114-8573	1	Spacer-Pivot	41	119-5060	1	Shield-Rubber, RH
20	117-6327	1	Bolt-HH,	42	119-5061	1	Shield-Rubber, LH
21	104-9216	2	Washer-Hardened	43	322-5	14	Screw-HH



## Cutter Head Assembly (continued)

Ref.	Part Number	Qty.	Description
45	3296-29	14	Nut-Lock, NI
46	104-3989	1	Decal
49	302-5	5	Fitting-Grease
50	302-40	1	Fitting-Grease

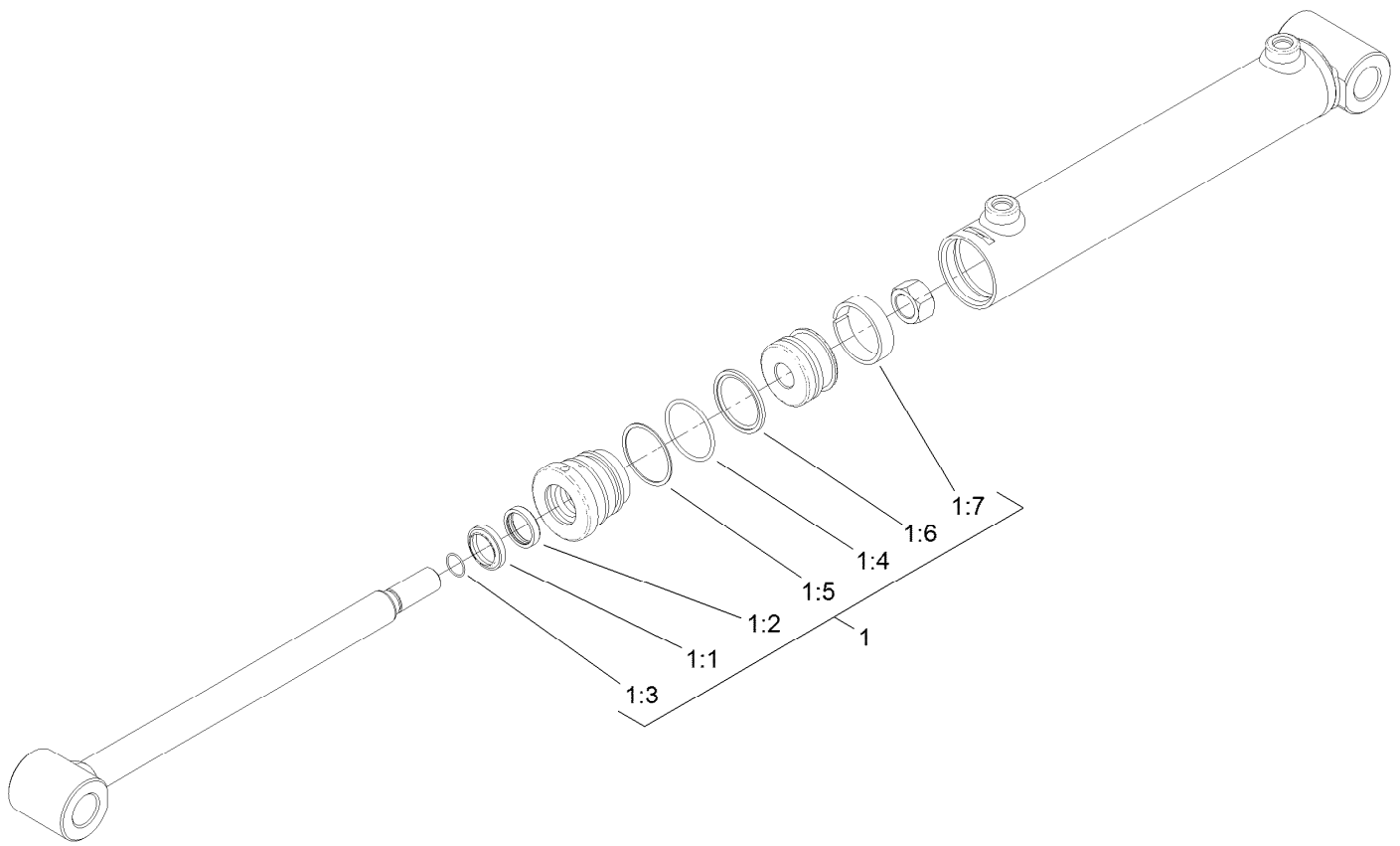
Ref.	Part Number	Qty.	Description
51	119-5118-03	1	Strap-Retainer, LH
52	119-5119-03	1	Strap-Retainer, Rear
53	119-5120-03	1	Strap-Retainer, RH



## Hydraulic Cylinder Assembly No. 117-6441

<i>Ref.</i>	<i>Part Number</i>	<i>Qty.</i>	<i>Description</i>
1	119-4632	1	Seal Kit

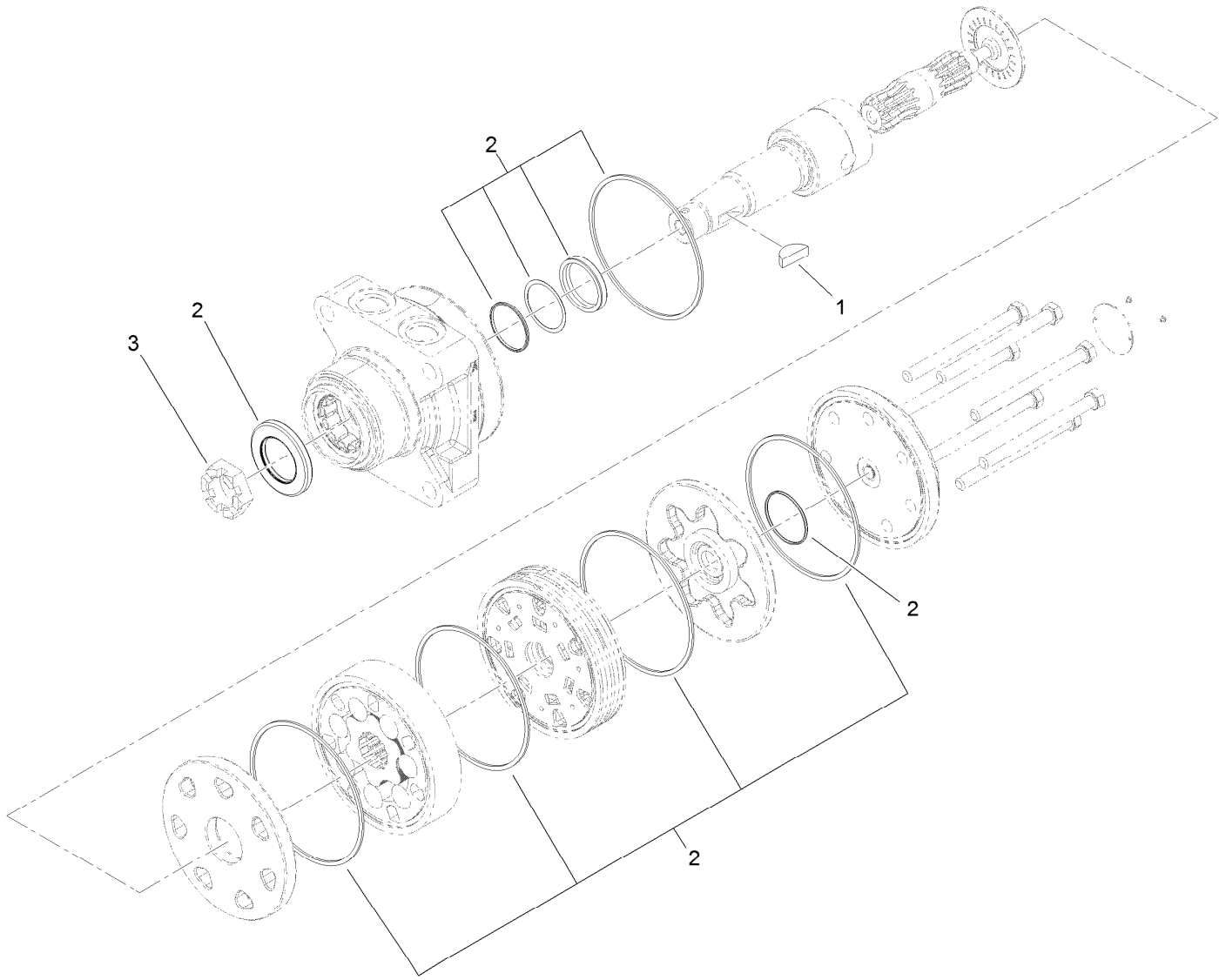




## Hydraulic Cylinder Assembly No. 112-2602

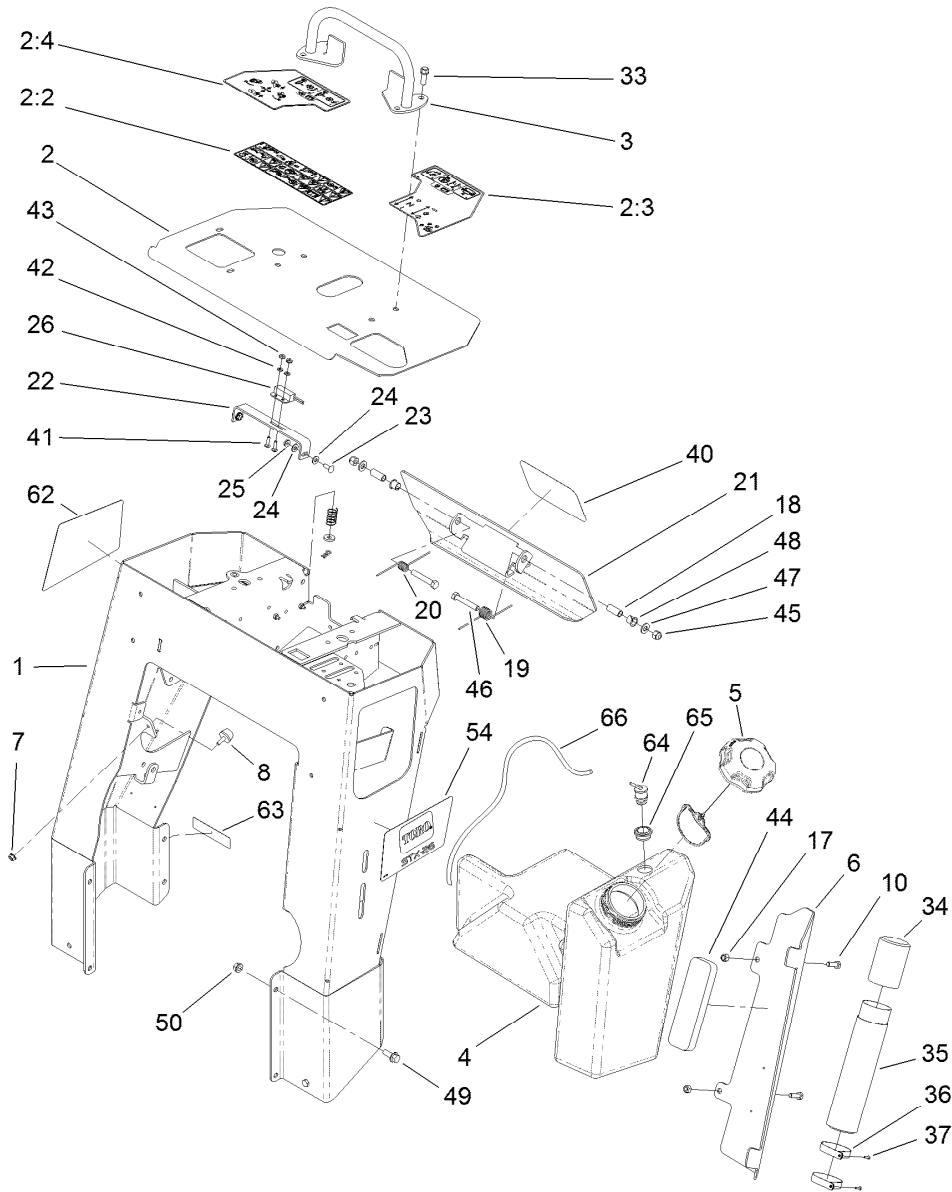
<i>Ref.</i>	<i>Part Number</i>	<i>Qty.</i>	<i>Description</i>
1	107-1183	1	Seal Kit
1:1		1	Wiper ●
1:2		1	U-Cup ●
1:3		1	O-Ring ●
1:4		1	O-Ring ●
1:5		1	Back-Up Ring ●
1:6		1	Capseal ●
1:7		1	Wear Ring ●

● Not serviced separately



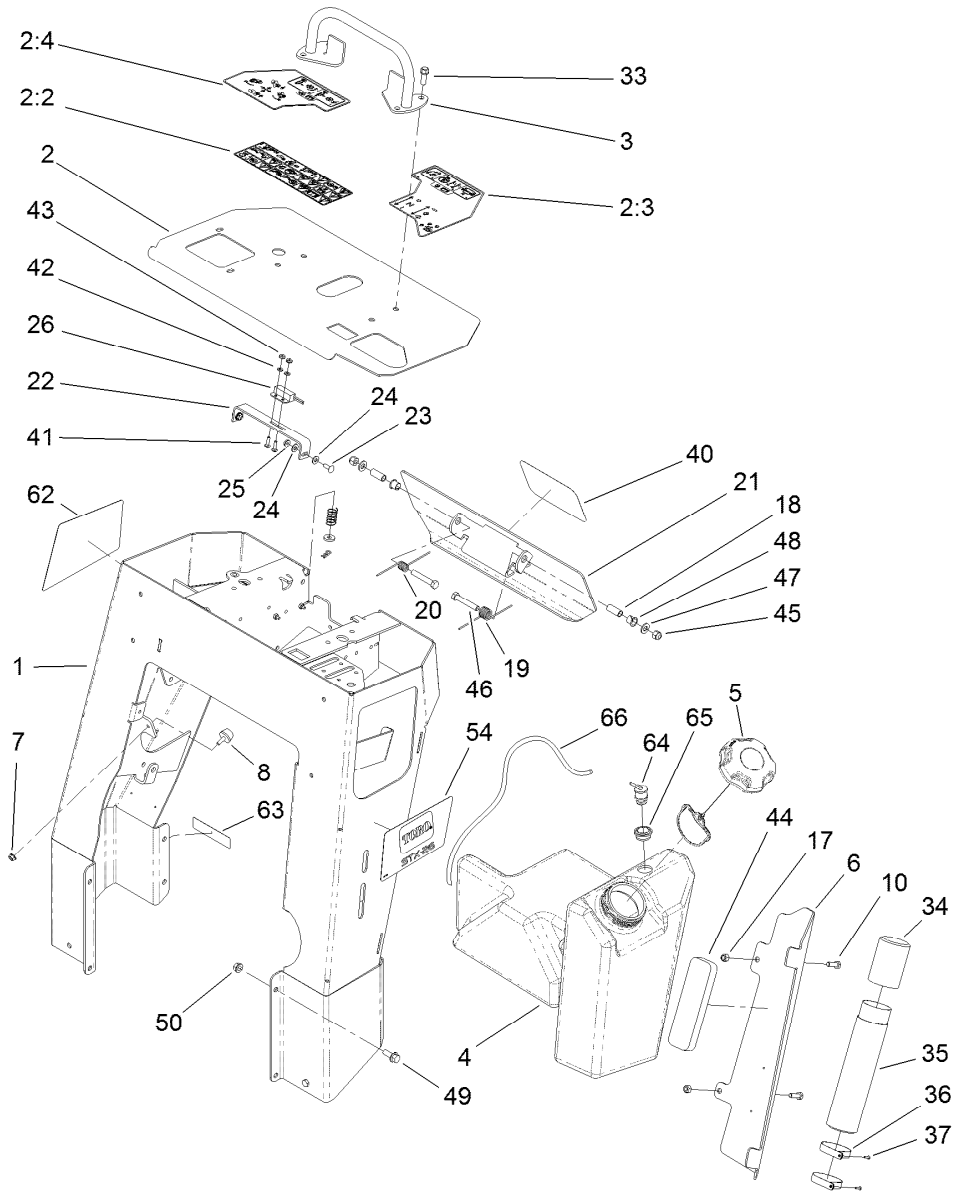
## Hydraulic Motor Assembly No. 119-4551

<i>Ref.</i>	<i>Part Number</i>	<i>Qty.</i>	<i>Description</i>
1	3257-42	1	Key-Woodruff
2	119-4631	1	Seal Kit
3	106-8159	1	Nut-Lock



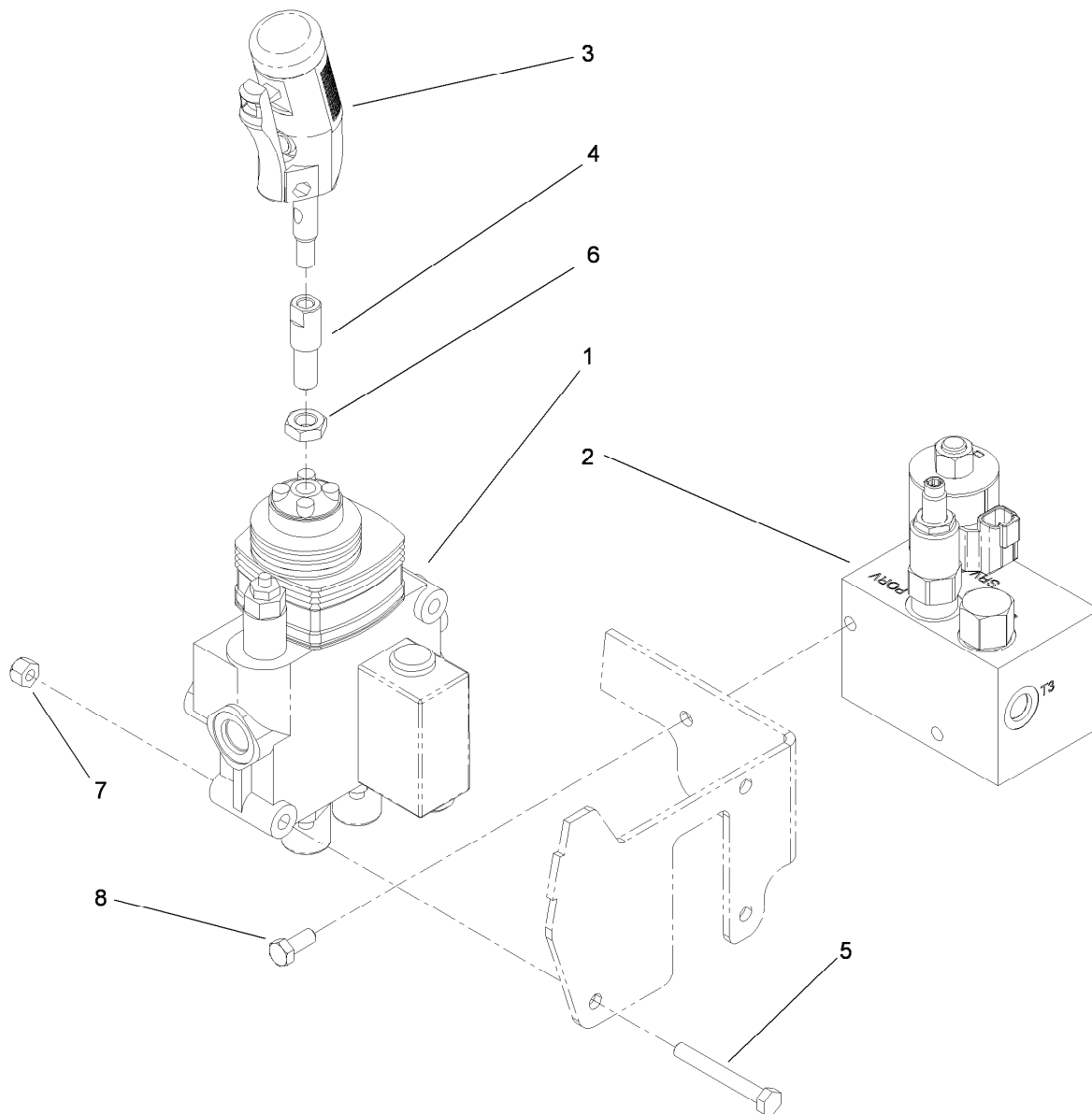
## Control Tower Assembly

Ref.	Part Number	Qty.	Description	Ref.	Part Number	Qty.	Description
1	119-5100-01	1	Tower ASM	26	100-1270	1	Switch-Proximity
2	119-4613	1	Control Panel ASM	33	95-1726	4	Screw-Taptite
2:2	119-4606	1	Decal-Warning	34	104-7048	1	Cap-Housing
2:3	119-4560	1	Decal-Console, LH	35	104-7050	1	Tube-Manual
2:4	119-4561	1	Decal-Console, RH	36	2412-120	2	Clamp-R
3	106-7715	1	Reference Bar ASM	37	3269-17	2	Rivet-Pop
4	120-7359	1	Tank-Fuel	40	105-1217	1	Decal
5	120-5461	1	Cap-Fuel, Ratcheting	41	3229-20	2	Screw-CARR
6	119-5086-01	1	Bracket-Cover, Tank	42	3256-51	2	Washer-Flat
7	32128-33	1	Nut-HF	43	32149-7	2	Nut-Keps
8	1-523420	1	Bumper	44	107-7507	1	Pad-Foam
10	322-5	2	Screw-HH	45	3296-39	2	Nut-Lock, NI
17	3296-29	2	Nut-Lock, NI	46	323-11	2	Screw-HH
18	114-1337	2	Spacer-Spring	47	3256-24	2	Washer-Flat
19	98-8425	1	Spring-Torsion, LH	48	256-257	2	Brushing-Nyliner
20	98-8424	1	Spring-Torsion, RH	49	3234-11	8	Screw-HHF
21	112-2786-03	1	Reverse Plate ASM	50	32128-40	8	Nut-Flange
22	100-1263	1	Plate-Switch	54	119-4563	1	Decal-Side,LH
23	3229-1	2	Screw-CARR	62	119-4565	1	Decal-Side,RH
24	3256-22	2	Washer-Flat	63	117-2718	1	Decal-Arrester, Spark
25	32149-2	2	Nut-Keps	64	114-0285	1	Valve-Rollover



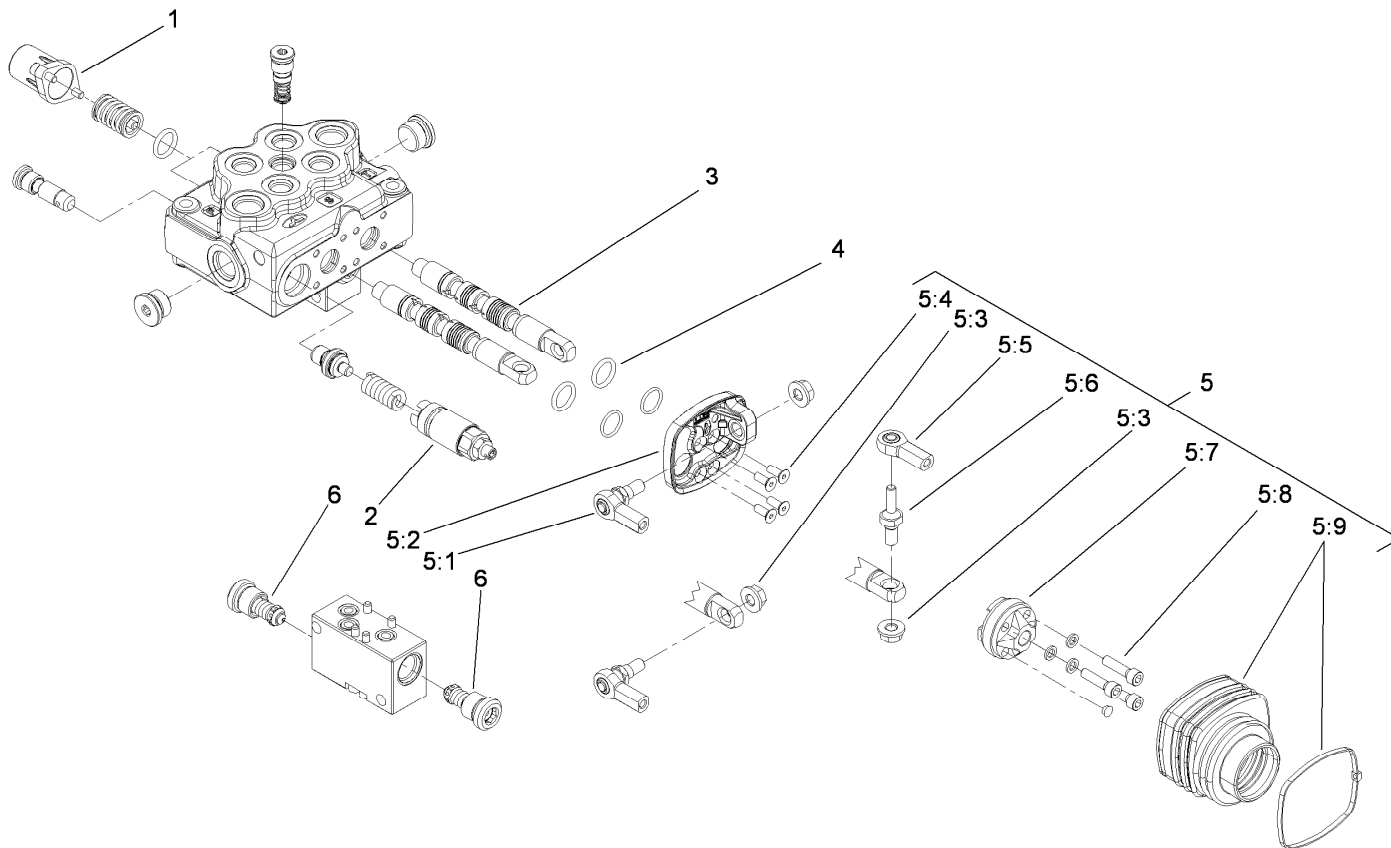
## Control Tower Assembly (continued)

Ref.	Part Number	Qty.	Description
65	114-0284	1	Grommet
66	117-6395	1	Hose-Vent, Tank



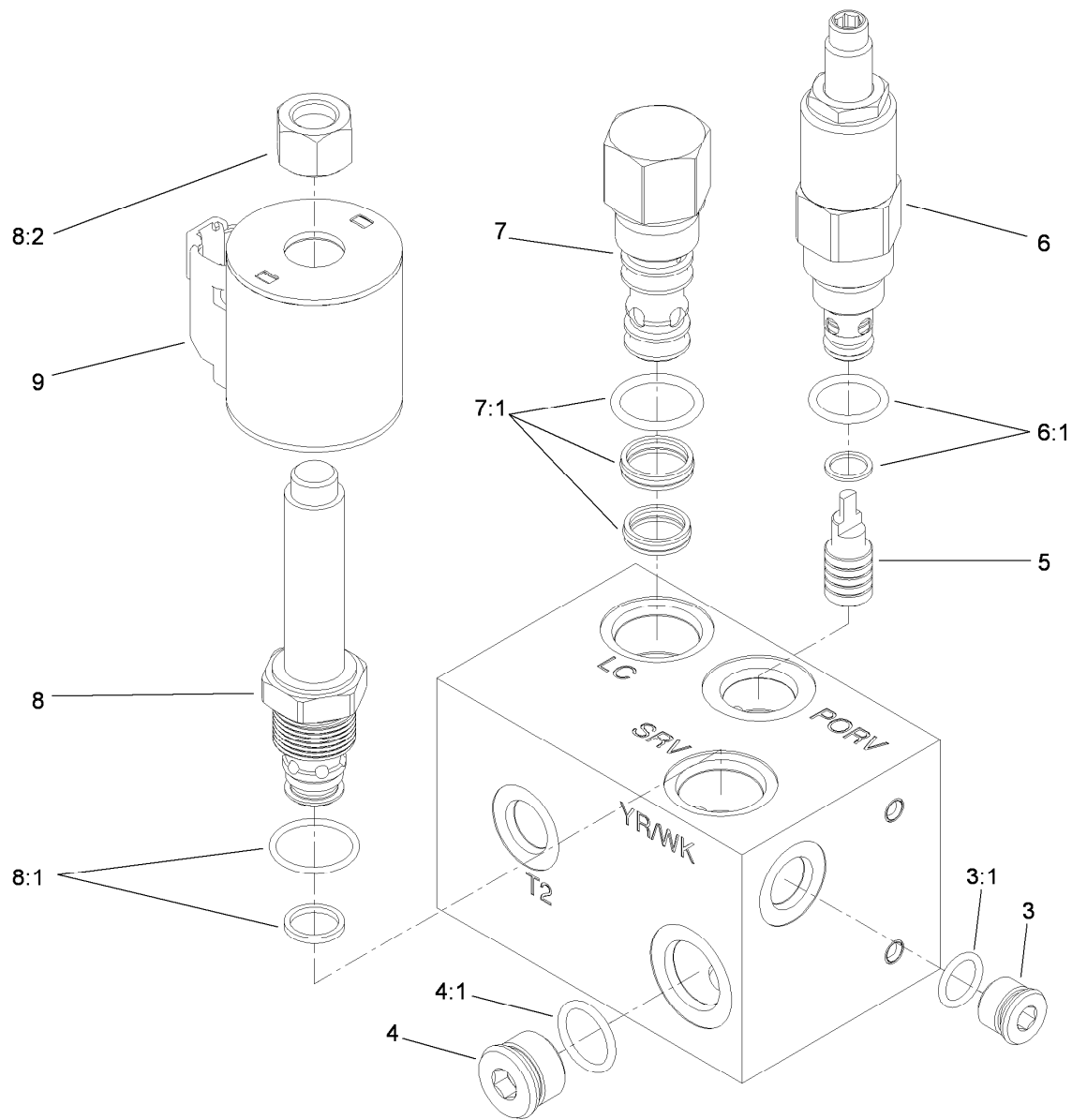
## Control Valve Assembly

Ref.	Part Number	Qty.	Description
1	119-4585	1	HYD Valve ASM
2	119-4586	1	Cutter Wheel Valve ASM
3	119-4587	1	Grip-Handle
4	119-5103	1	Adapter-Handle
5	322-12	3	Screw-HH
6	51-2070	1	Nut
7	3296-29	3	Nut-Lock, NI
8	322-3	2	Screw-HH



## Control Valve Assembly No. 119-4585

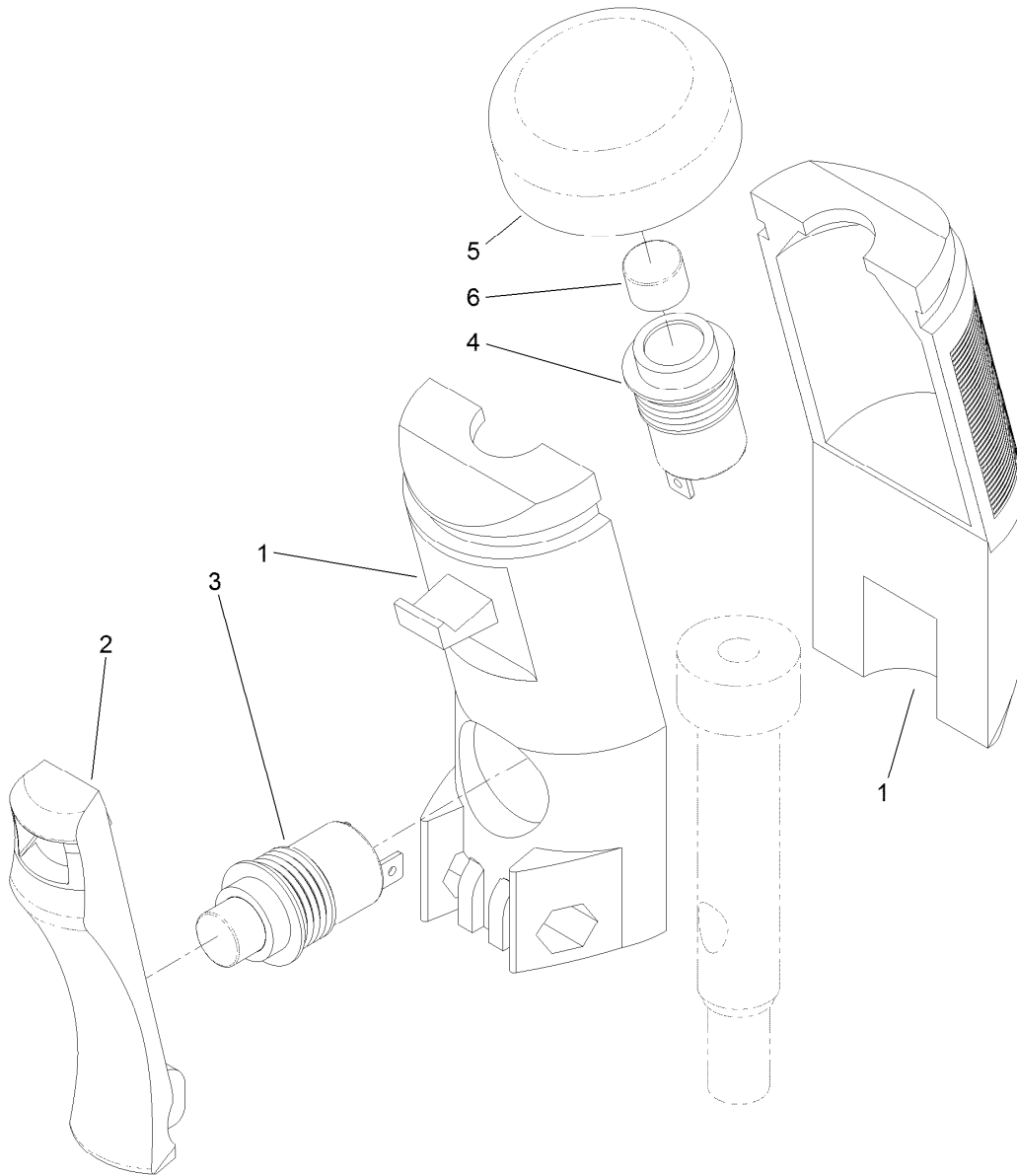
Ref.	Part Number	Qty.	Description
1	100-8801	2	High Force Spring Kit
2	100-8805	1	Valve-Relief
3	114-8625	2	Valve-Spool
4	106-7719	4	Seal-Valve
5	119-4622	1	Joystick Kit
5:1	119-4623	2	Joint-Joystick
5:2	119-4624	1	Base-Joystick
5:3	117-1350	3	Nut-HF, Lock
5:4	119-4625	4	Screw-Joystick
5:5	119-4626	1	Joint-Joystick
5:6	119-4627	1	Pin-Spool
5:7	119-4628	1	Holder-Joystick
5:8	3273-42	3	Screw-HSH
5:9	119-4629	1	Boot-Joystick
6	119-4630	2	Valve Kit



## Cutter Wheel Valve Assembly No. 119-4586

Ref.	Part Number	Qty.	Description
3	106-1026	1	Plug-HYD
3:1	237-42	1	O-Ring
4	106-1027	1	Plug-HYD
4:1	237-79	1	O-Ring
5	105-9157	1	Piston-Pilot
6	119-4620	1	Valve-Relief
6:1	105-9156	1	Seal Kit
7	105-9153	1	Element-Logic, Vented
7:1	105-9154	1	Seal Kit
8	120-7353	1	Valve-Relief, Solenoid
8:1	110-6316	1	Seal Kit ●
8:2	110-2635	1	Nut-Coil
9	119-4619	1	Coil-Solenoid

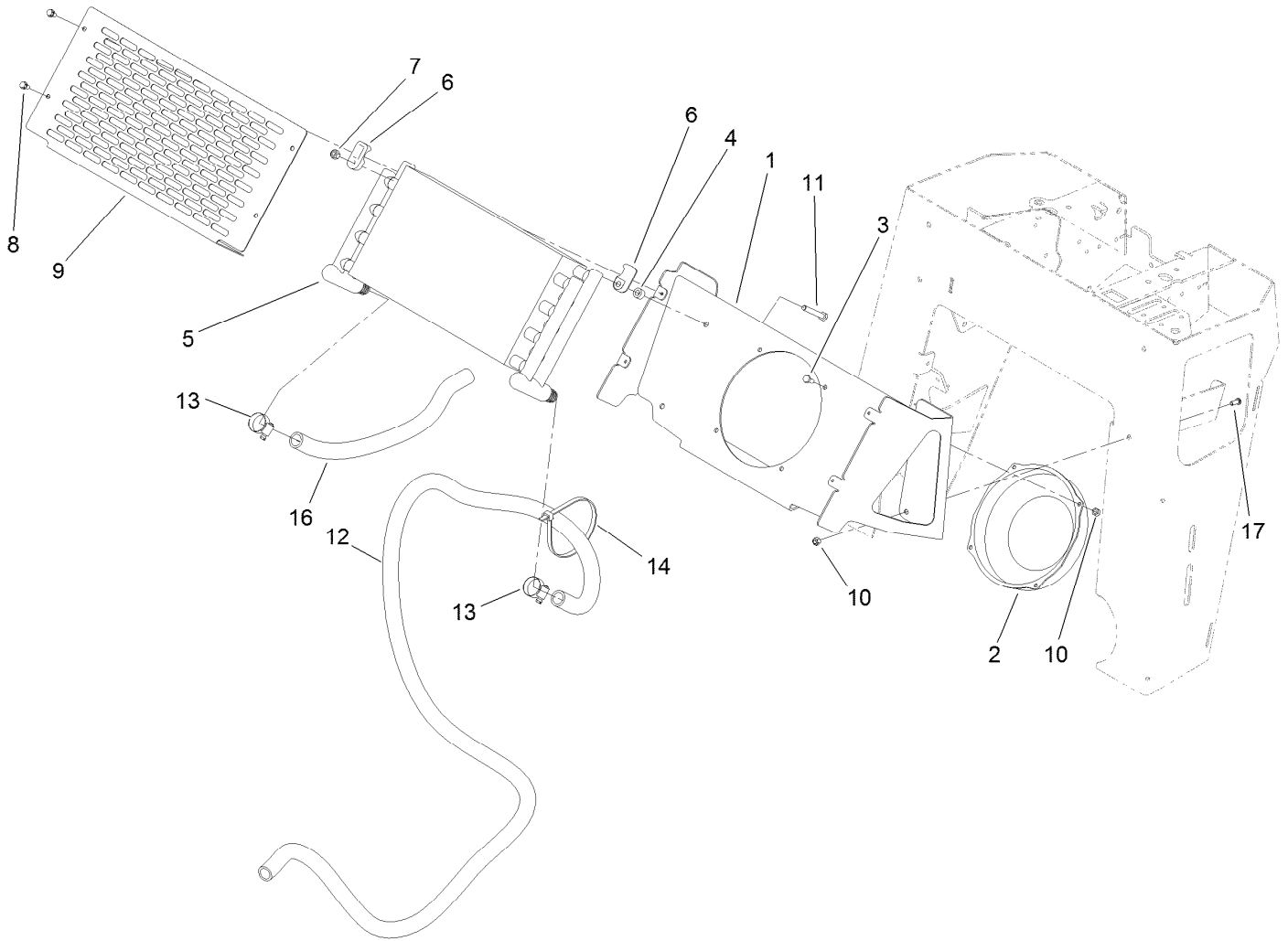
● Not illustrated



## Two-Button Handle Grip Assembly No. 119-4587

<i>Ref.</i>	<i>Part Number</i>	<i>Qty.</i>	<i>Description</i>
1	119-4637	1	Halve-Handle
2	119-4638	1	Lever-Handle
3	119-4639	1	Button-Push, Lever
4	119-4640	1	Button-Push, Top
5	119-4641	1	Boot-Button
6	119-4642	1	Actuator-Button

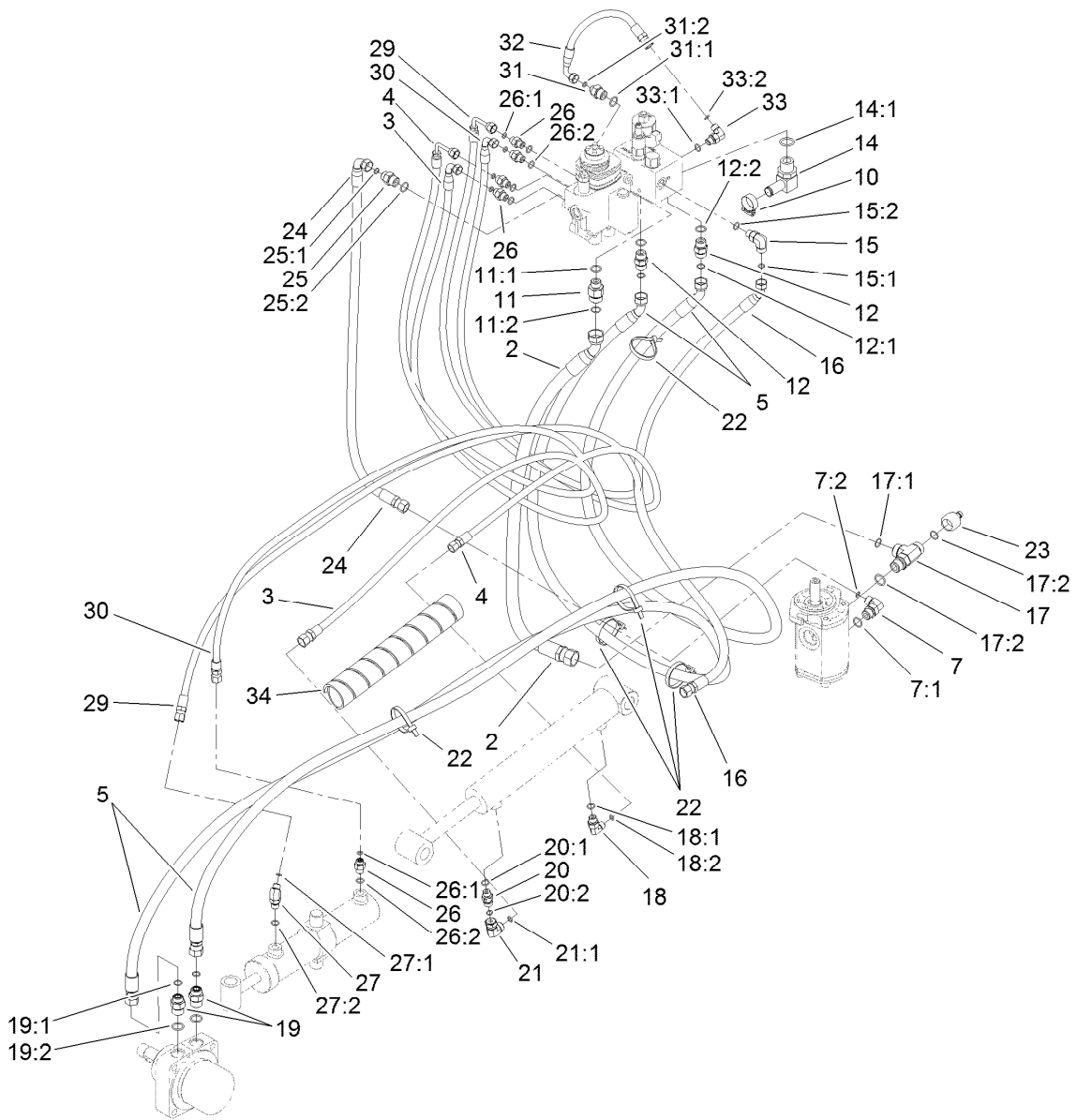




### Oil Cooler Assembly

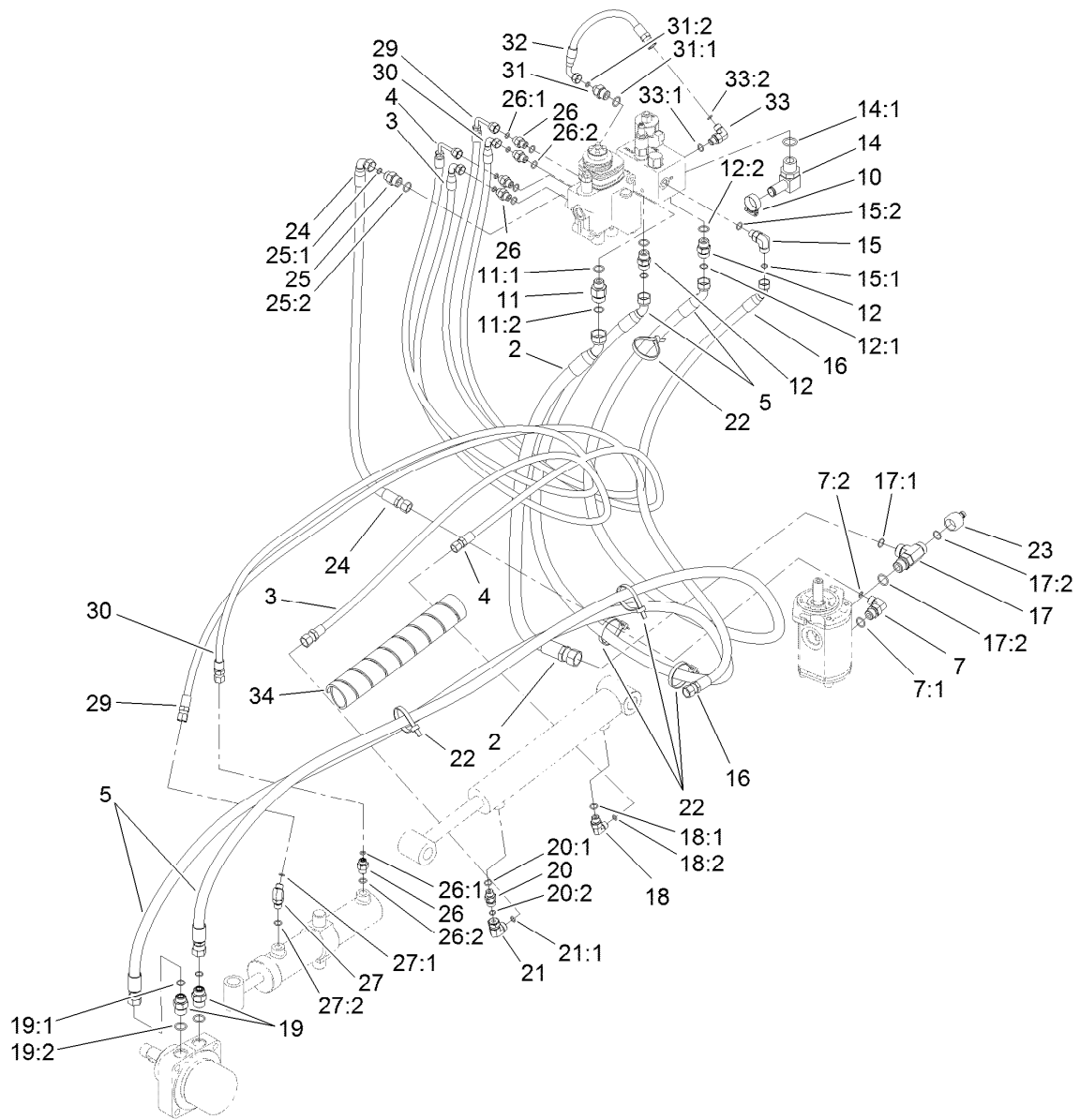
Ref.	Part Number	Qty.	Description
1	117-6296-01	1	Cooler Mount ASM
2	104-2809	1	Fan
3	321-3	7	Screw-HH
4	98-4695	4	Spacer
5	117-6320	1	Cooler-Oil
6	105-3943	8	Clamp-Cooler, Oil
7	3296-29	4	Nut-Lock, NI
8	32144-4	4	Screw-HWH

Ref.	Part Number	Qty.	Description
9	119-4633-01	1	Cover-Cooler
10	3296-42	8	Nut-Lock, NI
11	322-11	4	Screw-HH
12	119-4607	1	Hose-Return
13	2412-129	2	Clamp-Hose
14	3334-945	1	Tie-Cable
16	119-4571	1	Hose-Return
17	3274-31	1	Screw-HSBH



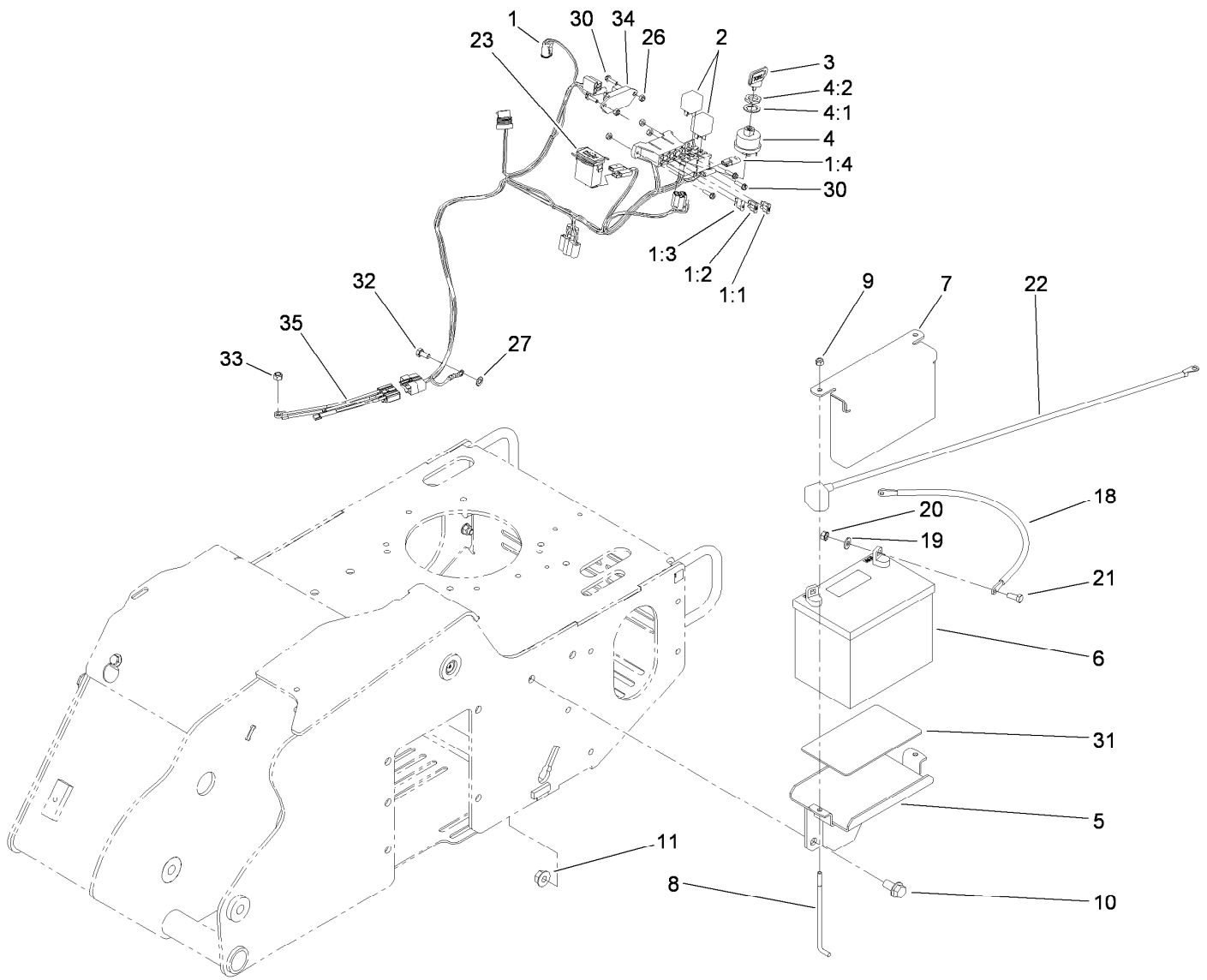
## Hydraulic Routing Assembly

Ref.	Part Number	Qty.	Description	Ref.	Part Number	Qty.	Description
2	119-4589	1	HYD Hose ASM	17	340-22	1	Fitting-HYD, Tee
3	119-4590	1	HYD Hose ASM	17:1	237-65	2	O-Ring
4	119-4601	1	HYD Hose ASM	17:2	237-80	1	O-Ring
5	119-4591	2	HYD Hose ASM	18	340-82	1	Adapter
7	340-18	1	Fitting-HYD, 90 DEG	18:1	237-42	1	O-Ring
7:1	237-79	1	O-Ring	18:2	237-21	1	O-Ring
7:2	237-22	1	O-Ring	19	340-6	2	Fitting-HYD, Straight
10	2412-129	2	Clamp-Hose	19:1	237-30	1	O-Ring
11	340-155	1	Fitting-HYD, Straight	19:2	237-80	1	O-Ring
11:1	237-79	1	O-Ring	20	115-4081	1	Valve-Check
11:2	237-151	1	O-Ring	20:1	237-42	1	O-Ring
12	340-4	2	Fitting-HYD, Straight	20:2	237-22	1	O-Ring
12:1	237-30	1	O-Ring	21	340-159	1	Fitting-HYD, 90 DEG
12:2	237-79	1	O-Ring	21:1	237-22	2	O-Ring
14	353-987	1	Fitting-HYD, 90 DEG (Barbed)	22	3334-945	9	Tie-Cable
14:1	237-81	1	O-Ring	23	86-5860	1	Nipple
15	340-77	1	Fitting-HYD, 90 DEG	24	119-4592	1	HYD Hose ASM
15:1	237-22	1	O-Ring	25	340-3	1	Adapter
15:2	237-42	1	O-Ring	25:1	237-22	1	O-Ring
16	119-4602	1	HYD Hose ASM	25:2	237-79	1	O-Ring



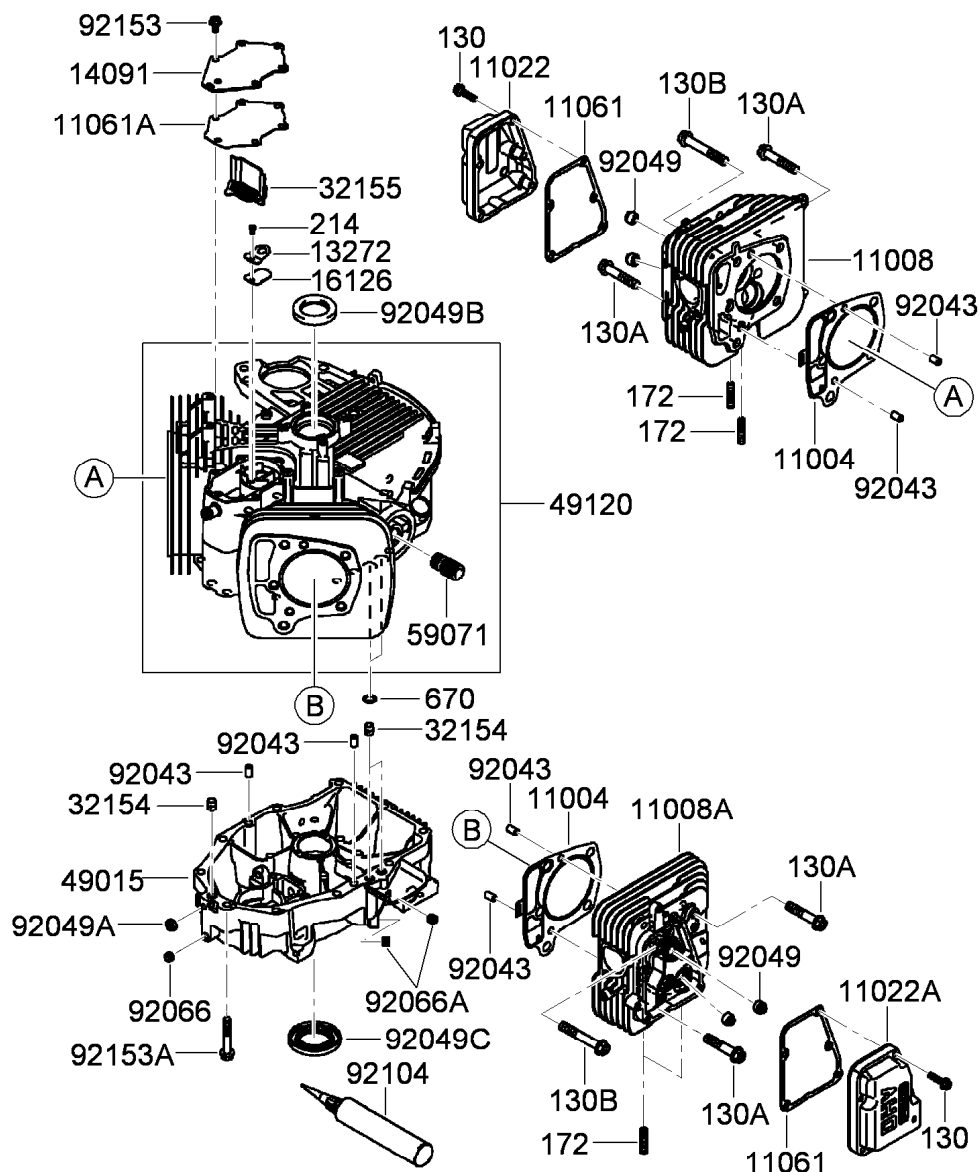
## Hydraulic Routing Assembly (continued)

<i>Ref.</i>	<i>Part Number</i>	<i>Qty.</i>	<i>Description</i>	<i>Ref.</i>	<i>Part Number</i>	<i>Qty.</i>	<i>Description</i>
26	340-1	5	Fitting-HYD, Straight (Adapter)	31	340-133	1	Adapter
26:1	237-21	1	O-Ring	31:1	237-79	1	O-Ring
26:2	237-42	1	O-Ring	31:2	237-21	1	O-Ring
27	340-137	1	Fitting	32	119-4594	1	HYD Hose ASM
27:1	237-21	1	O-Ring	33	340-82	1	Adapter
27:2	237-42	1	O-Ring	33:1	237-42	1	O-Ring
29	119-4593	1	HYD Hose ASM	33:2	237-21	1	O-Ring
30	119-4603	1	HYD Hose ASM	34	119-4635	1	Wrap-Spiral



## Electrical Assembly

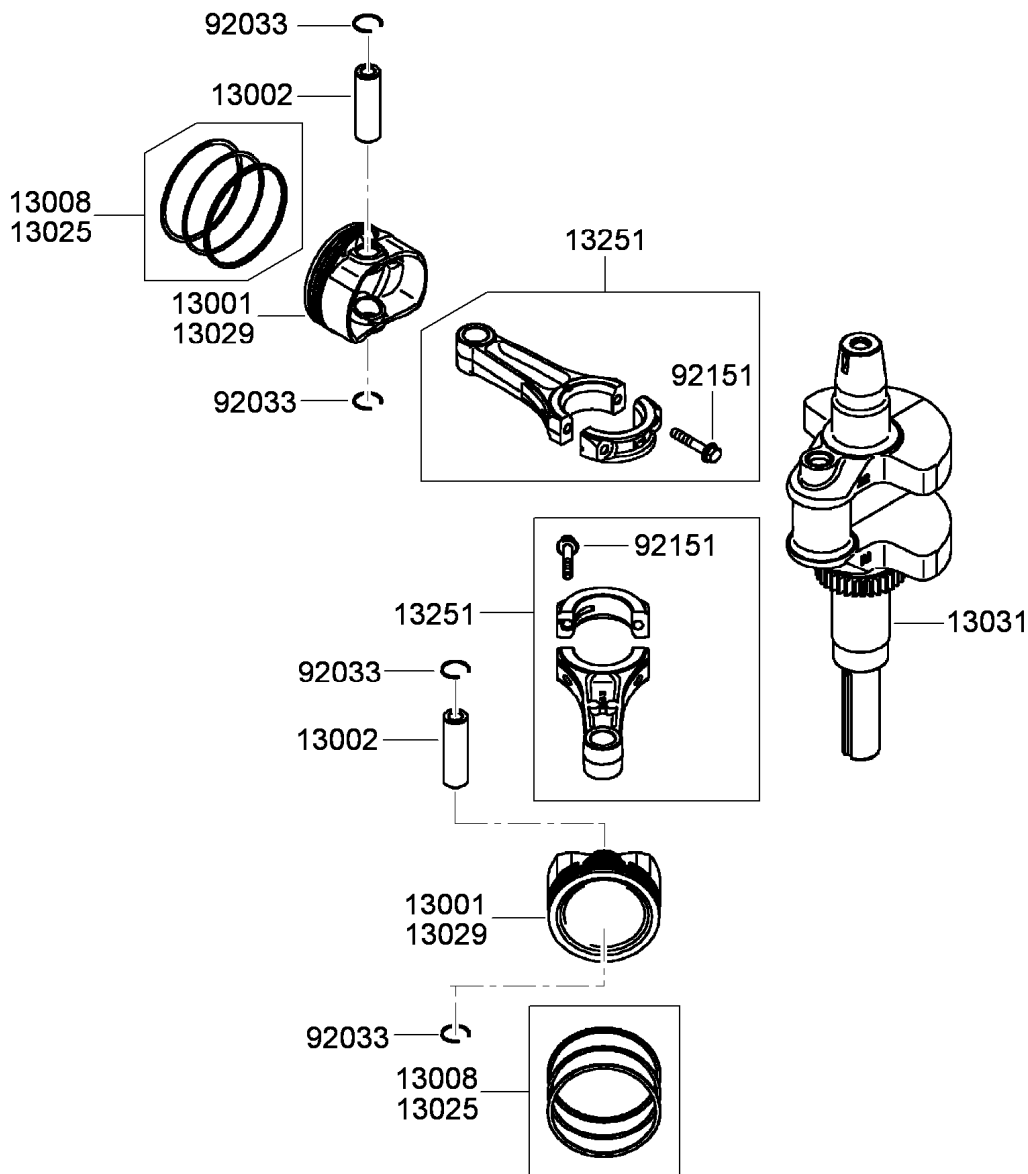
Ref.	Part Number	Qty.	Description	Ref.	Part Number	Qty.	Description
1	119-4555	1	Harness-Wire	11	32128-49	2	Nut-HHF
1:1	109103	1	Fuse-Blade, 30 Amp	18	106-8945	1	Cable-Battery, Positive
1:2	109102	1	Fuse-Blade, 25 Amp	19	3256-2	2	Washer-Flat
1:3	109101	1	Fuse-Blade, 20 Amp	20	32149-1	2	Nut-Keps
1:4	116-0053	1	Cap-Plug	21	322-3	2	Screw-HH
2	98-7249	2	Relay	22	117-6422	1	Cable-Battery, Black
3	63-8360	1	Key-Ignition	23	1-513374	1	Meter-Hour
4	88-9830	1	Key Switch ASM	26	3296-2	5	Nut-Lock, NI
4:1	3254-5	1	Washer-Tooth, Internal	27	3255-8	1	Washer-Lock
4:2	218-461	1	Nut-HH	30	32105-13	5	Screw-HWH
5	105-3150-01	1	Battery Tray ASM	31	62-4300	1	Pad-Skid, Anti
6	104-8162	1	Battery	32	33114-016	1	Screw-HH
7	115-6621-03	1	Plate-Hold Down, Battery	33	33004-00	1	Nut-HF
8	104-8567	2	Holdown-Battery	34	100-6170	1	Module-Delay
9	3296-42	2	Nut-Lock, NI	35	119-4604	1	Harness
10	3234-6	2	Screw-HHF				



## Cylinder and Crankcase Assembly

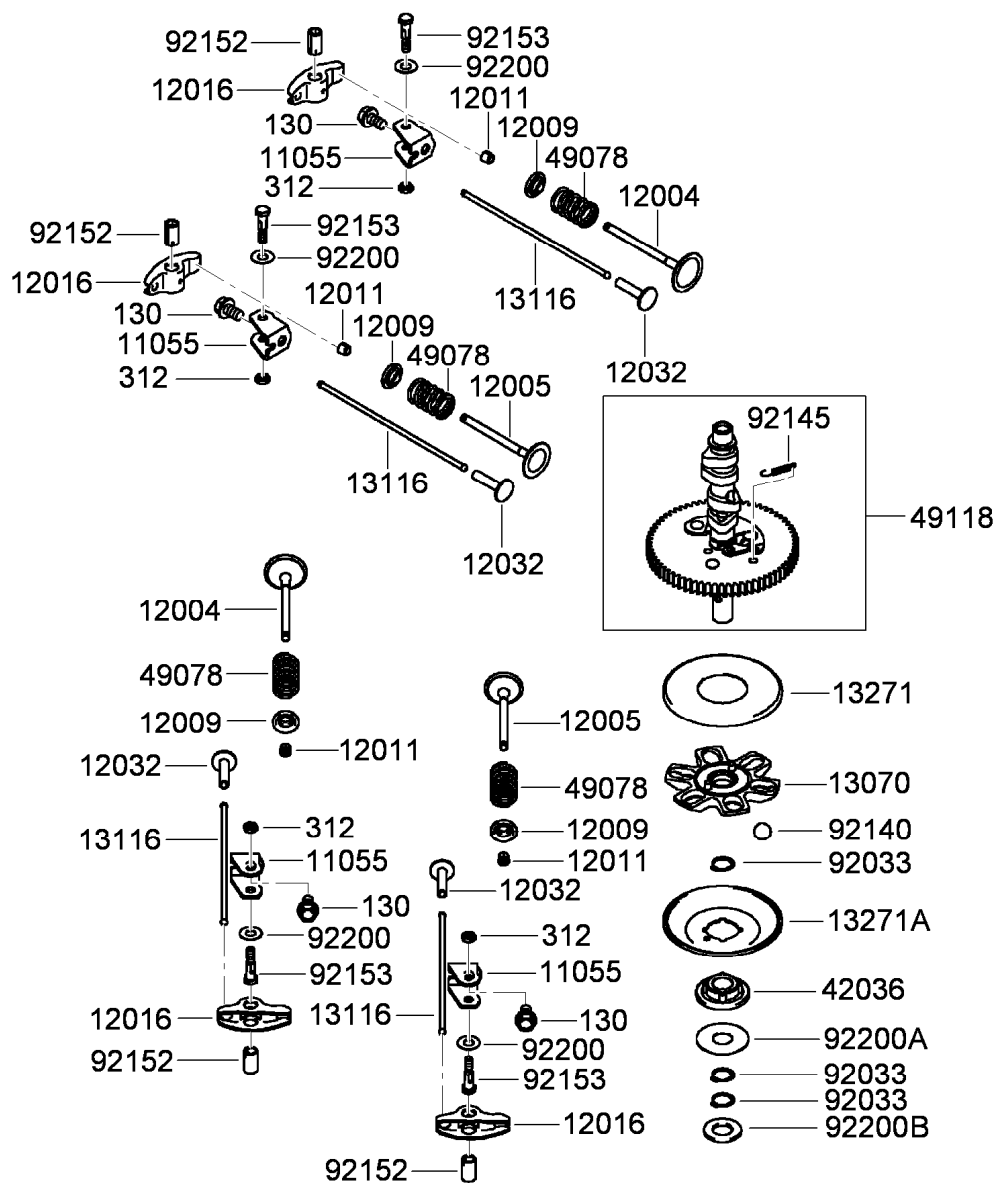
Ref.	Part Number	Qty.	Description
130	93-8548	10	Bolt-Flanged (6X25)
130A	119-5822	4	Bolt-Flanged (10X50)
130B	119-5823	6	Bolt-Flanged (10X65)
172	114-8658	4	Bolt-Stud (8X18)
214	115-6422	1	Screw-Pan (4X8)
670	95-9771	2	O-Ring (11Mm)
11004	119-5800	2	Gasket-Head
11008	119-5801	1	Head-Cylinder (No.1)
11008A	119-5802	1	Head-Cylinder (No.2)
11022	119-5803	1	Case-Rocker (No.1)
11022A	119-5804	1	Case-Rocker (No.2)
11061	119-5805	2	Gasket-Case, Rocker
11061A	119-5806	1	Gasket-Breather
13272	119-5808	1	Plate-Breather
14091	119-5809	1	Cover-Breather
16126	119-5810	1	Valve-Breather

Ref.	Part Number	Qty.	Description
32154	119-5811	3	Pipe
32155	119-5812	1	Pipe-Breather
49015	119-5813	1	Cover-Crankcase
49120	119-5814	1	Crankcase ASM
59071	95-9715	1	Joint
92043	KW10694	6	Pin
92049	114-8650	4	Seal-Oil, Rv C2 (6X11X10.2)
92049A	119-5816	1	Seal-Oil, So (8X14X5) Hs
92049B	119-5817	1	Seal-Oil, Sd (35X48X8) R Hs
92049C	119-5818	1	Seal-Oil (38X62X8) Mtclv
92066	119-5819	1	Plug
92066A	119-5820	2	Plug
92104	119-5821	1	Gasket-Liquid (Tb1217H)
92153	114-8655	6	Bolt (6X12)
92153A	114-8656	10	Bolt (8X50)



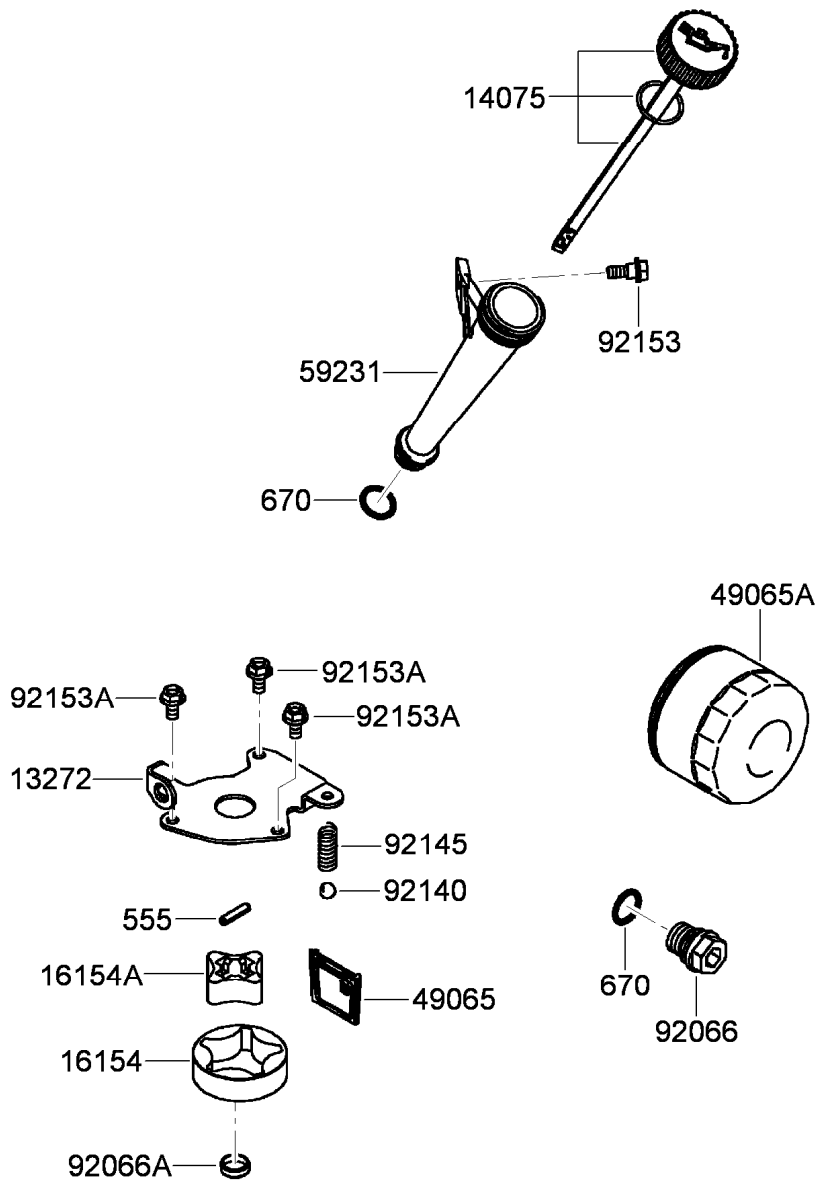
## Piston and Crankshaft Assembly

Ref.	Part Number	Qty.	Description
13001	119-5824	2	Piston-Engine
13002	119-5825	2	Pin-Piston
13008	119-5826	2	Piston Ring Set
13025	119-5827	1	Piston Ring Set, L (0.5)
13029	119-5828	1	Piston-Engine, L (0.5)
13031	119-5829	1	Crankshaft ASM
13251	119-5830	2	Connecting Rod ASM
92033	119-5831	4	Ring-Snap
92151	115-6565	4	Bolt (6X35)



### Valve and Camshaft Assembly

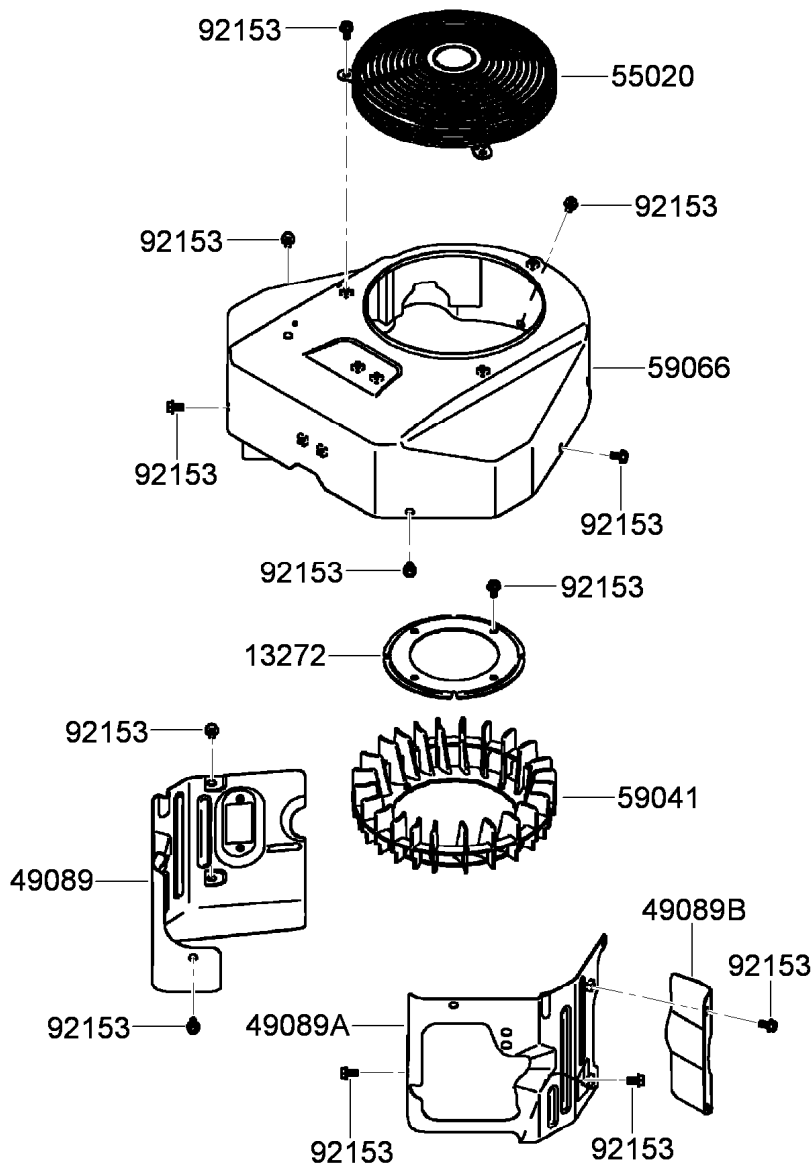
<i>Ref.</i>	<i>Part Number</i>	<i>Qty.</i>	<i>Description</i>	<i>Ref.</i>	<i>Part Number</i>	<i>Qty.</i>	<i>Description</i>
130	119-5845	4	Bolt-Flanged (8X14)	13271A	114-8672	1	Plate-Governor
312	119-5846	4	Nut-Hex (6Mm)	42036	114-8673	1	Sleeve
11055	119-5832	4	Bracket	49078	119-5838	4	Spring-Valve, Engine (In)
12004	119-5833	2	Valve-Intake	49118	119-5839	1	Camshaft ASM
12005	119-5834	2	Valve-Exhaust	92033	114-8675	3	Ring-Snap
12009	108-2525	4	Retainer-Spring, Valve	92140	114-8676	6	Ball
12011	95-8744	8	Plate-Bedbar, Lower	92145	114-8677	1	Spring
12016	119-5835	4	Arm-Rocker	92152	119-5840	4	Collar
12032	108-2527	4	Tappet	92153	119-5841	4	Bolt (6X29.5)
13070	119-5836	1	Guide-Governor	92200	119-5842	4	Washer (8.1X18X0.5)
13116	119-5837	4	Rod-Push	92200A	119-5843	1	Washer (16X42X0.91)
13271	114-8671	1	Plate	92200B	119-5844	1	Washer (16.3X30X2.28)



## Lubrication Equipment Assembly

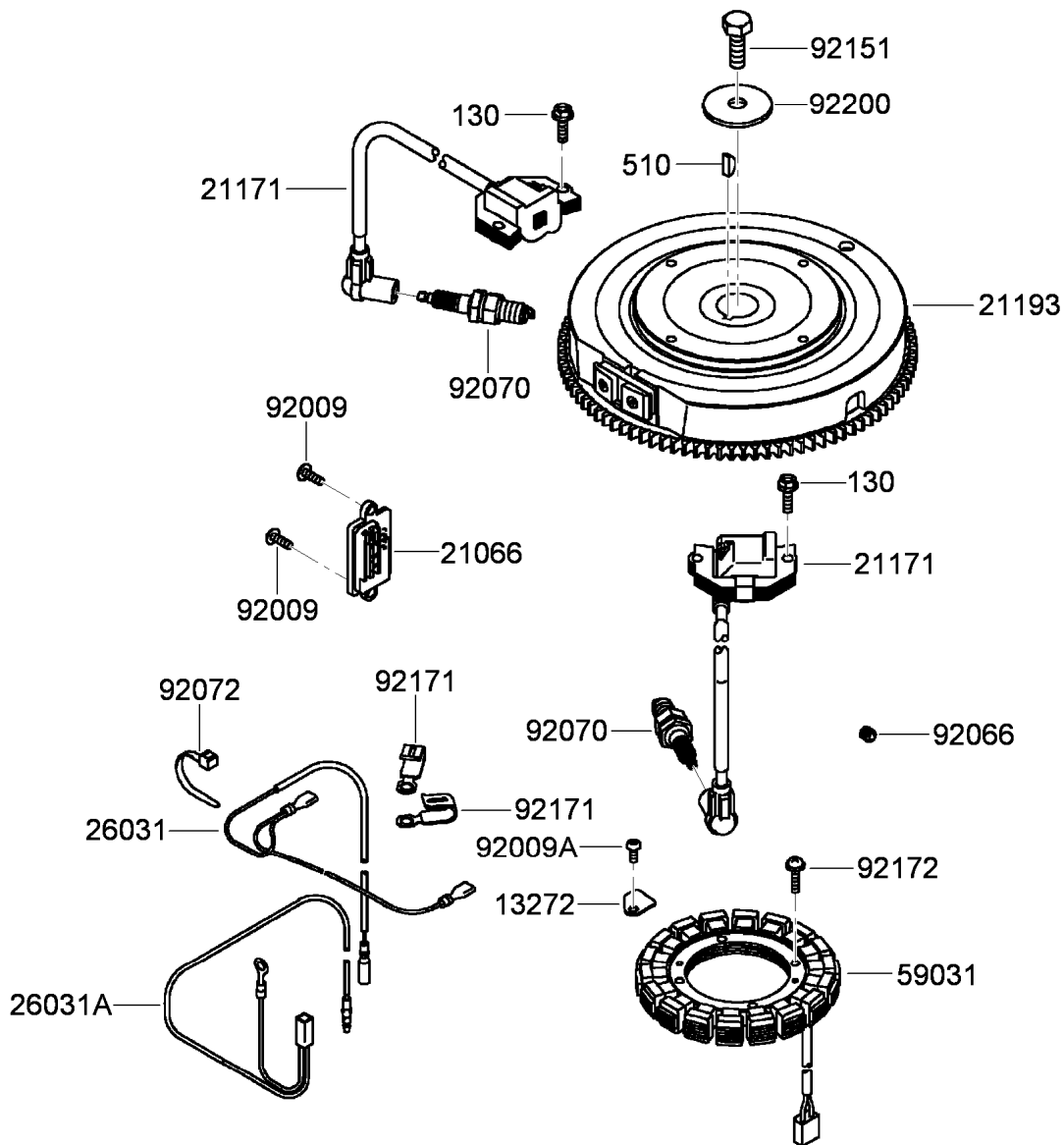
Ref.	Part Number	Qty.	Description
555	119-5859	1	Pin-Spring (4X20)
670	1-413506	2	O-Ring (16Mm)
13272	119-5847	1	Plate-Rotor
14075	119-5848	1	Oil Gauge Cap ASM
16154	119-5849	1	Rotor-Pump, Outer
16154A	119-5850	1	Rotor-Pump, Inner
49065	119-5851	1	Filter-Oil
49065A	119-5852	1	Filter-Oil
59231	119-5853	1	Tube-Filler, Oil
92066	119-5854	1	Plug
92066A	119-5855	1	Plug
92140	119-5856	1	Ball
92145	119-5857	1	Spring
92153	119-5858	1	Bolt
92153A	115-6419	3	Bolt (6X12)





## Cooling Equipment Assembly

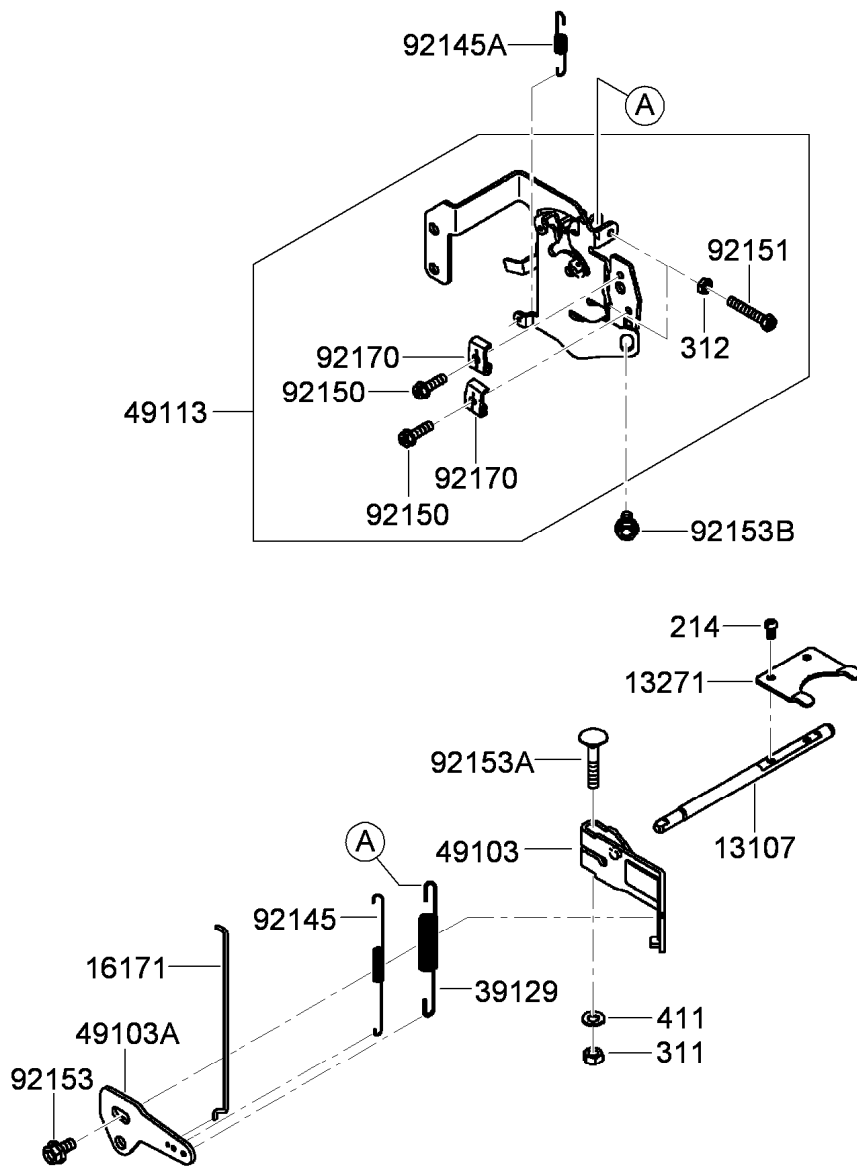
Ref.	Part Number	Qty.	Description
13272	119-5860	1	Plate-Fan
49089	119-5862	1	Shroud-Engine
49089A	119-5863	1	Shroud-Engine
49089B	119-5864	1	Shroud-Engine
55020	119-5865	1	Guard
59041	119-5867	1	Fan
59066	119-5868	1	Housing-Fan
92153	114-8655	18	Bolt (6X12)



## Electric Equipment Assembly

Ref.	Part Number	Qty.	Description
130	95-9893	4	Bolt-Flanged (6X20)
510	KW10163	1	Key-Woodruff
13272	119-5870	1	Plate
21066	120-7356	1	Regulator-Voltage
21171	119-5872	2	Ignition Coil ASM
21193	119-5874	1	Flywheel ASM
26031	119-5876	1	Harness
26031A	119-5877	1	Harness
59031	120-7355	1	Coil-Charging

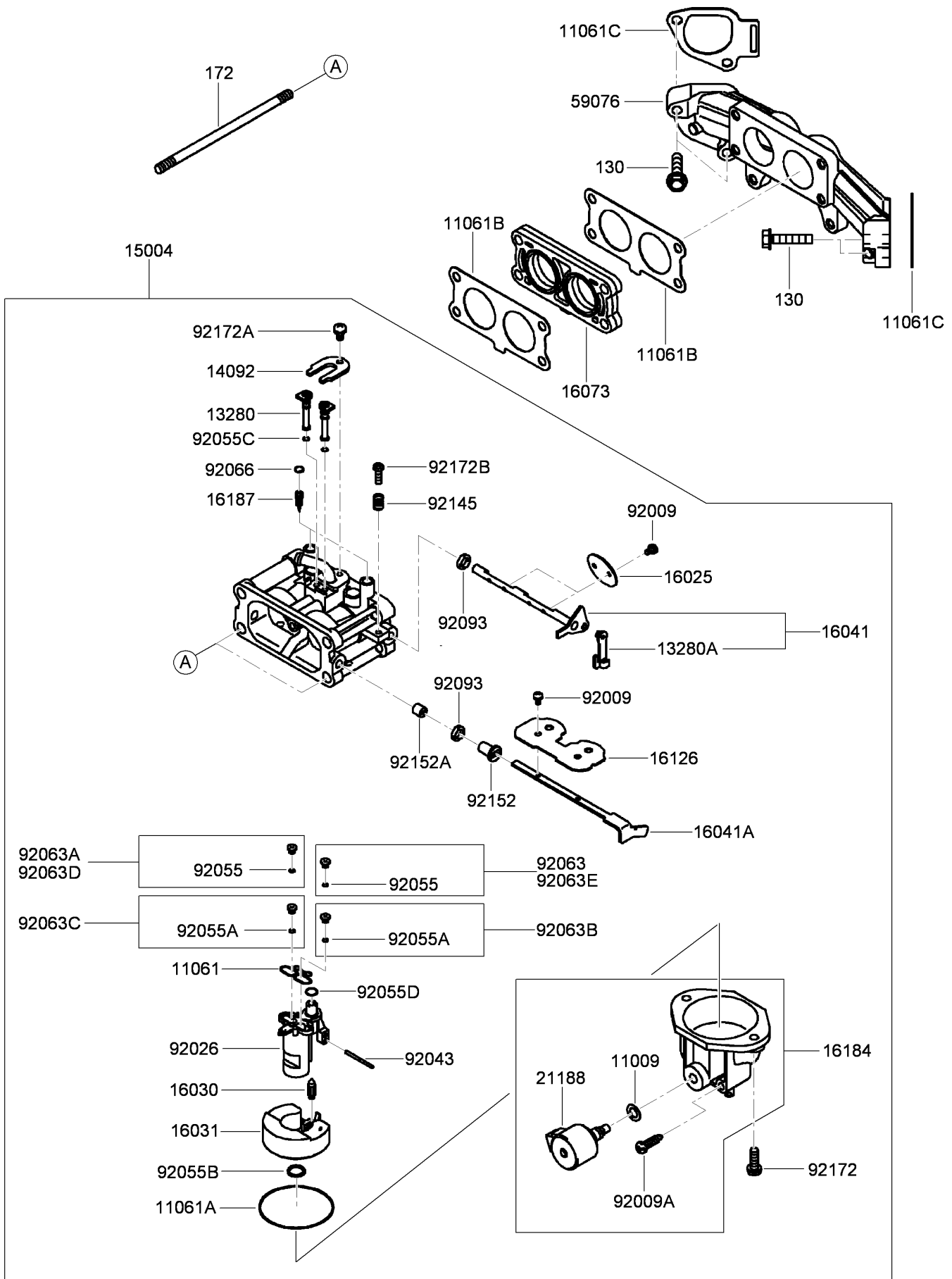
Ref.	Part Number	Qty.	Description
92009	119-5879	2	Screw
92009A	95-9716	1	Screw
92066	119-5820	1	Plug
92070	92-2153	2	Spark Plug
92072	115-6585	1	Band
92151	115-6408	1	Bolt (12X30)
92171	115-8665	2	Clamp
92172	115-4030	4	Screw (5X20)
92200	115-4031	1	Washer (12.2X46X3)



## Control Equipment Assembly

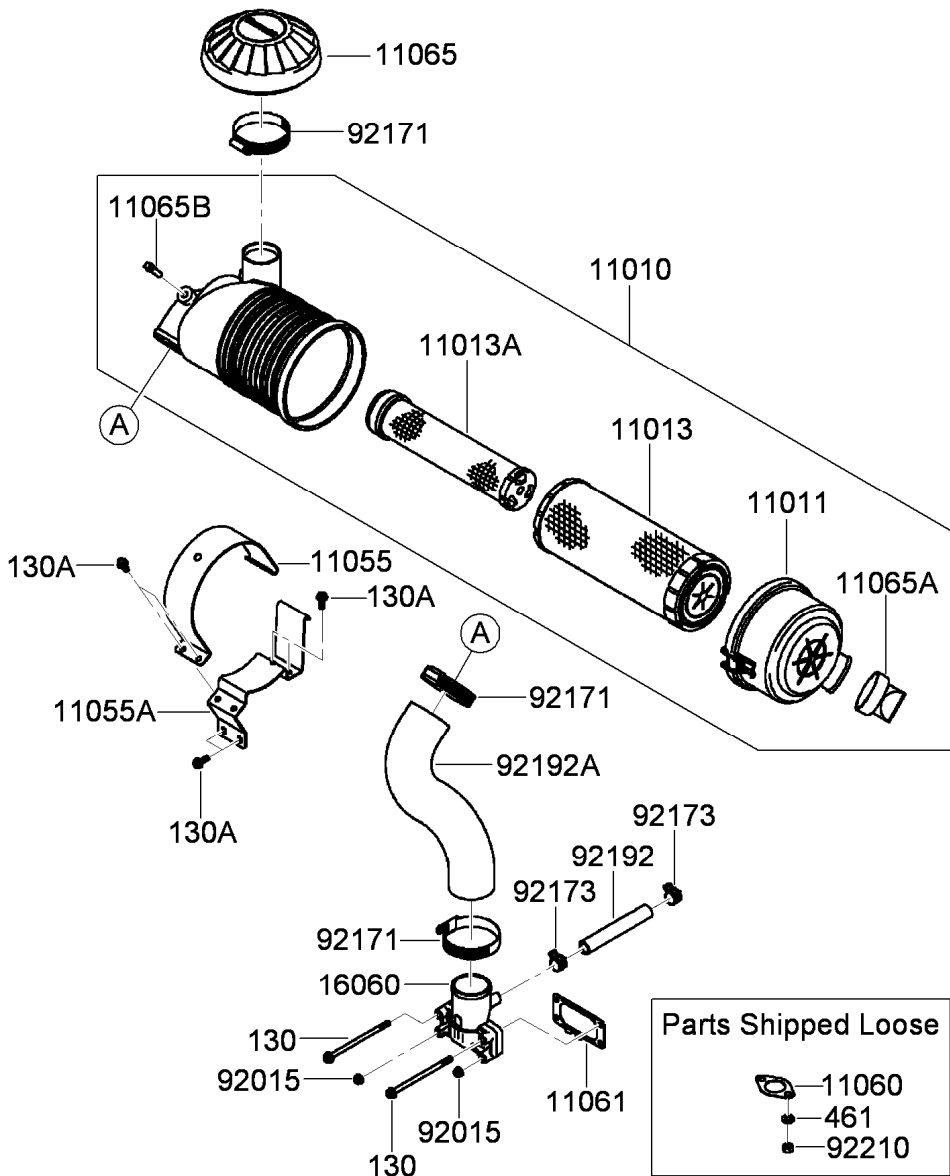
Ref.	Part Number	Qty.	Description	Ref.	Part Number	Qty.	Description
214	115-6422	2	Screw-Pan (4X8)	49113	119-5888	1	Control Panel ASM
311	114-8698	1	Nut-Hex (6Mm)	92145	119-5889	1	Spring
312	119-5894	2	Nut-Hex (5Mm)	92145A	119-5890	1	Spring
411	115-6423	1	Washer-Plain (6Mm)	92150	95-9853	2	Bolt (5X18)
13107	119-5882	1	Shaft-Governor	92151	119-5891	2	Bolt (5X30)
13271	119-5883	1	Plate	92153	119-5892	1	Bolt (6X12)
16171	119-5884	1	Link	92153A	115-6420	1	Bolt (6X35)
39129	119-5885	1	Spring-Governor	92153B	119-5892	1	Bolt (6X12)
49103	119-5886	1	Arm-Governor	92170	115-6421	2	Clamp
49103A	119-5887	1	Arm-Governor				

# Carburetor Assembly



## Carburetor Assembly (continued)

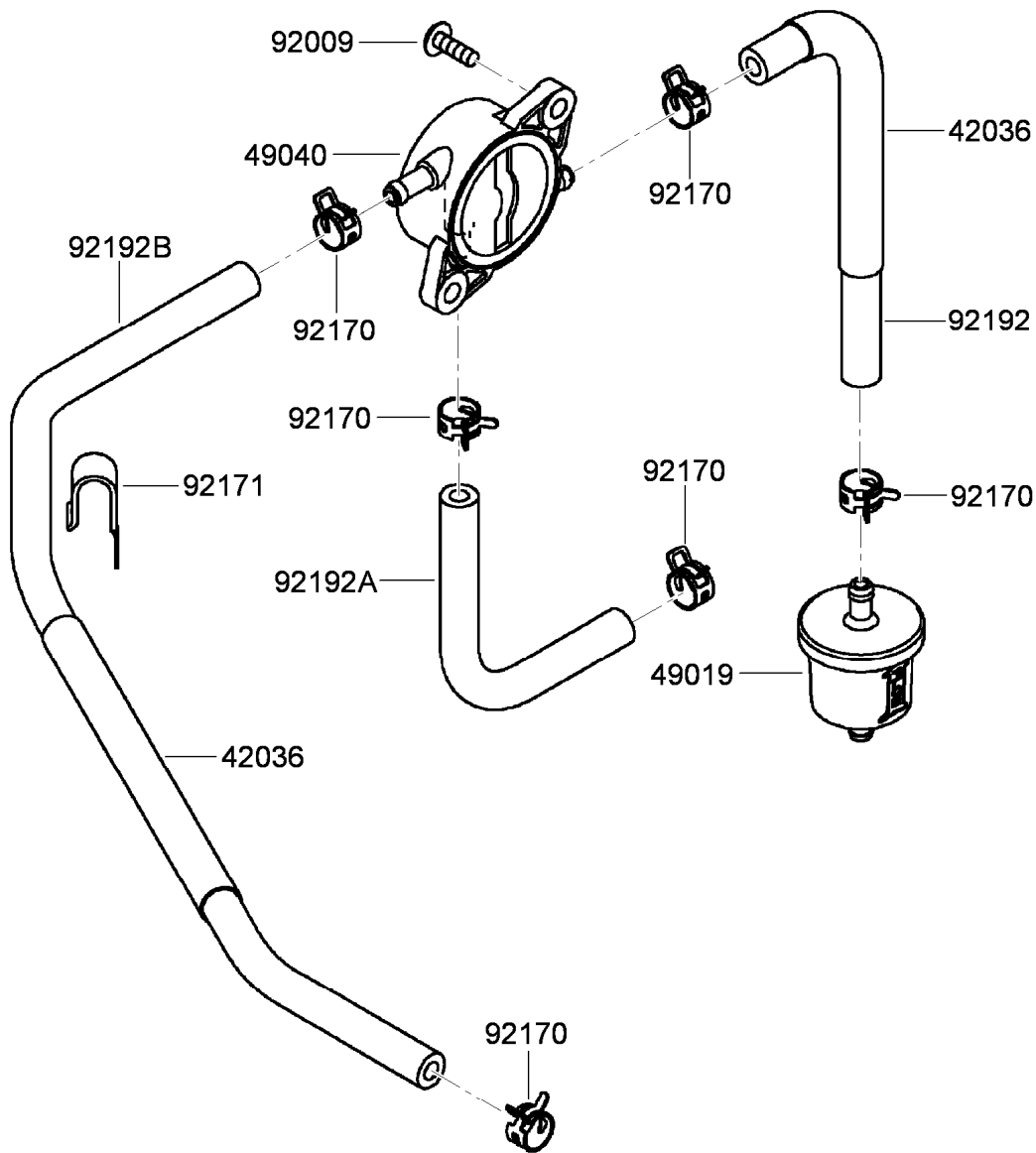
<i>Ref.</i>	<i>Part Number</i>	<i>Qty.</i>	<i>Description</i>	<i>Ref.</i>	<i>Part Number</i>	<i>Qty.</i>	<i>Description</i>
130	119-5940	4	Bolt-Flanged (6X30)	92009A	119-5917	1	Screw-Drain
172	119-5941	2	Bolt-Stud (6X115)	92026	119-5918	1	Spacer
11009	119-5895	1	Gasket	92043	119-5919	1	Pin-Float
11061	119-5896	1	Gasket	92055	119-5920	1	O-Ring
11061A	119-5897	1	Gasket	92055A	119-5921	2	O-Ring
11061B	119-5898	2	Gasket-Carburetor/Manifold	92055B	119-5921	1	O-Ring
11061C	119-5899	2	Gasket-Manifold	92055C	119-5923	2	O-Ring
13280	119-5901	2	Holder	92055D	119-5924	1	O-Ring
13280A	119-5902	1	Holder	92063	119-5926	1	Jet-Main (No. 108)
14092	119-5903	1	Cover	92063A	119-5927	1	Jet-Main (No. 104)
15004	119-5904	1	Carburetor ASM	92063B	119-5928	1	Jet-Main (No. 114)
16025	119-5905	2	Valve-Throttle	92063C	119-5929	1	Jet-Main (No. 110)
16030	119-5906	1	Valve-Float	92063D	119-5930	1	Jet-Main (No. 107)
16031	119-5907	1	Float	92063E	119-5931	1	Jet-Main (No. 111)
16041	119-5908	1	Carburetor Throttle Shaft ASM	92066	119-5932	2	Plug-Expansion
16041A	119-5909	1	Shaft-Choke, Carburetor	92093	119-5933	2	Seal (6.9)
16073	119-5910	1	Insulator	92145	119-5934	1	Spring
16126	119-5911	1	Valve	92152	119-5935	1	Collar
16184	119-5912	1	Float Chamber ASM	92152A	119-5936	1	Collar
16187	119-5913	2	Needle-Jet	92172	119-5937	2	Screw (M5)
21188	119-5914	1	Solenoid	92172A	119-5938	1	Screw (M4)
59076	119-5915	1	Manifold-Intake	92172B	119-5939	1	Screw-Adjust, Throttle
92009	119-5916	6	Screw				



## Air Filter and Muffler Assembly

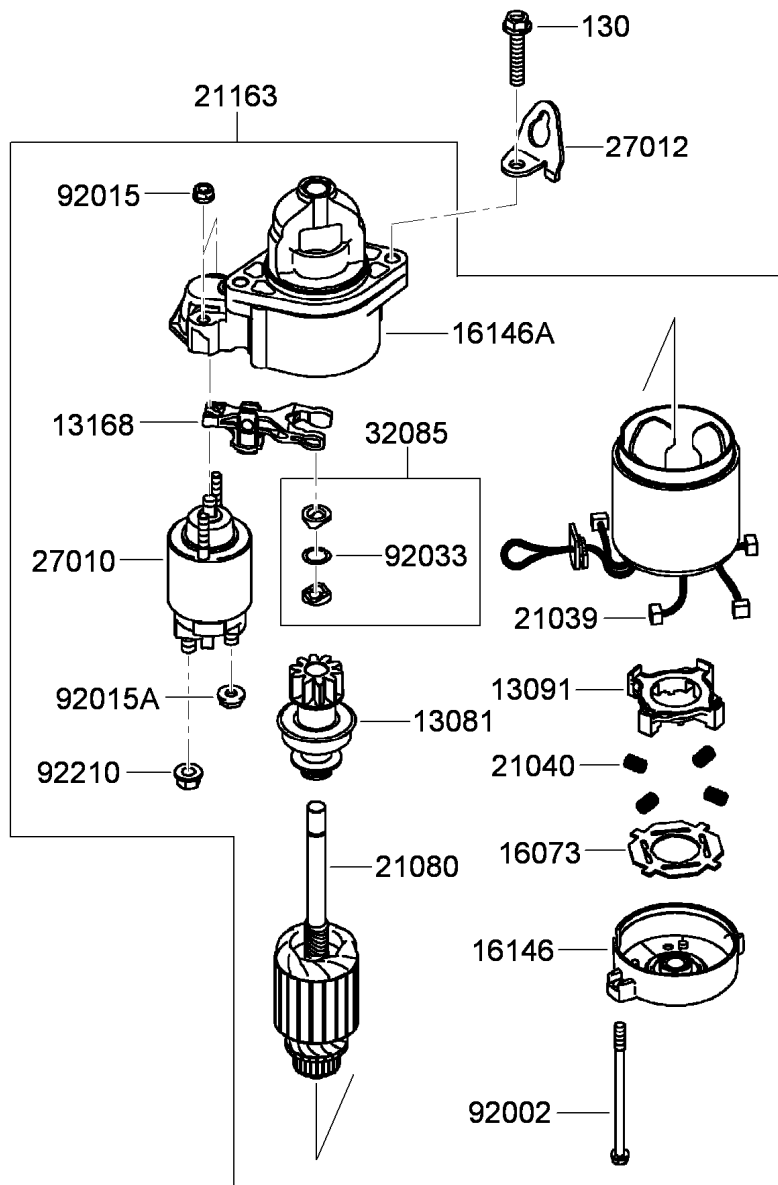
Ref.	Part Number	Qty.	Description
130	119-5960	2	Bolt-Flanged (6X110)
130A	119-5961	6	Bolt-Flanged (6X16)
461	119-5962	4	Washer-Spring (8Mm)
11010	119-5942	1	Air Filter ASM
11011	119-5943	1	Case-Filter, Air
11013	119-5944	1	Element-Filter, Air
11013A	119-5945	1	Element-Filter, Air
11055	119-5946	1	Bracket
11055A	119-5947	1	Bracket
11060	119-5948	2	Gasket-Muffler
11061	119-5949	1	Gasket

Ref.	Part Number	Qty.	Description
11065	119-5950	1	Cap
11065A	119-5951	1	Cap
11065B	119-5952	1	Cap
16060	119-5953	1	Pipe-Intake
92015	119-5954	2	Nut
92171	119-5955	3	Clamp
92173	119-5956	2	Clamp
92192	119-5957	1	Tube (12.6X18.6X118)
92192A	119-5958	1	Tube
92210	119-5959	4	Nut (M8)



## Fuel Tank and Valve Assembly

Ref.	Part Number	Qty.	Description
42036	119-5963	2	Sleeve
49019	119-5964	1	Filter-Fuel
49040	119-5965	1	Pump-Fuel
92009	119-5879	2	Screw
92170	119-5967	6	Clamp
92171	119-5968	1	Clamp
92192	119-5969	1	Tube (6.35X12.7X185)
92192A	119-5970	1	Tube (6.4X12.7X150)
92192B	119-5971	1	Tube (6.35X12.7X390)



## Starter Assembly

Ref.	Part Number	Qty.	Description
130	119-5991	2	Bolt-Flanged (8X40)
13081	119-5972	1	Clutch ASM
13091	119-5973	1	Holder-Brush
13168	119-5974	1	Lever-Shift
16073	119-5975	1	Insulator
16146	119-5976	1	Cover ASM
16146A	119-5977	1	Cover ASM
21039	119-5978	4	Brush
21040	119-5979	4	Spring-Brush
21080	119-5980	1	Armature

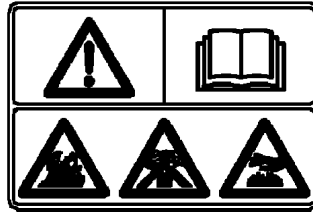
Ref.	Part Number	Qty.	Description
21163	119-5981	1	Starter-Electric
27010	119-5982	1	Switch
27012	119-5983	1	Hook
32085	119-5985	1	Stopper
92002	119-5986	2	Bolt
92015	119-5987	2	Nut
92015A	119-5988	1	Nut
92033	119-5989	1	Ring-Snap
92210	119-5990	1	Nut



56014



56070



## Label Set

<i>Ref.</i>	<i>Part Number</i>	<i>Qty.</i>	<i>Description</i>
56014	119-5992	1	Emblem
56070	115-6469	1	Label-Warning

# Attachments and Accessories

## For 23210 STX-26 Stump Grinder

**Product Name**

**Model/Part**

Spark Arrestor Screen ..... 94-8157

## Notes:



**Count on it.**